

Post-graduate

Prospectus 2018

LEADERS IN IDEAS AND SOLUTIONS



Contents

Why Choose Heriot-Watt	02
Reputation and Rankings	04
Why Edinburgh	06
A Global University	08
Scholarships and Funding	10
Your Career and Employability	12
Pioneering Research with Global Impact	14
Driving Water Resource Management School of Energy, Geoscience, Infrastructure and Society	16
Pioneering Cell Biology School of Engineering and Physical Sciences	18
Revolutionising Robotics School of Mathematical and Computer Sciences	20
Innovative Textiles Design School of Textiles and Design	22
Tackling Gender Inequality School of Social Sciences	24
What Can I Study at Heriot-Watt	26
Our Postgraduate Research	36
How to Apply	40
Supporting You	42
Index/Maps	46





Why Choose Heriot-Watt

Heriot-Watt is one of the world's leading universities with strong links to international business and industry driven by our established reputation as a top research-led institution.

With a rich heritage stretching back to 1821, we are a truly global university bringing together scholars who are leaders in ideas and solutions delivering innovation, educational excellence and ground-breaking research.

I strongly recommend a postgraduate programme at Heriot-Watt University; it has an extremely good reputation, the University is located in an amazing city, it has a huge number of international students and, finally, the courses are well structured.

Nicholas Mancini,
MSc Finance and Management
School of Social Sciences



STUDY AT HERIOT-WATT UNIVERSITY

FROM TOP 10 RANKINGS TO STUDY ABROAD OPTIONS, THERE ARE MANY REASONS TO CHOOSE HERIOT-WATT. HERE ARE JUST A FEW OF THEM.

A RICH HERITAGE

We are proud that since our foundation in 1821 we have been outward-looking pioneers of education, in pursuit of knowledge to the benefit of society and the world.

GLOBAL REACH

We are a truly global university with over 29,000 students, five campuses and over 100 learning partners around the world. We are one of Scotland's most international universities; around a third of Heriot-Watt students in Edinburgh are from outside the UK.

A WORLD-CLASS REPUTATION

We are world-renowned for excellence in teaching and research. We are ranked in the top 2% of universities worldwide (QS World University Rankings 2017/18) and in the top 30 universities in the UK (*The Guardian* University League Table 2018). We are in the top 10 in the UK and first in Scotland for research impact (REF 2014).

STRONG LINKS TO BUSINESS AND INDUSTRY

Our taught programmes and research are informed by the needs of business and industry. We actively facilitate collaborations and partnerships, building strategic alliances and promoting knowledge transfer.

GLOBALLY EMPLOYABLE GRADUATES

Global companies actively seek out our graduates as they are work ready. Our programmes are designed to ensure that students receive a relevant, career-orientated education. As a result, more than 86% of our students are in graduate-level jobs or further study six months after completing their programme.

OPPORTUNITIES TO STUDY ABROAD

When you join Heriot-Watt University you become part of a friendly, global community. We actively encourage our students to push geographical boundaries through our opportunities to study abroad.

WORLD-CHANGING RESEARCH

Heriot-Watt University is globally recognised for pioneering research and innovation, changing the world and transforming lives. Our research focuses on real world issues and we are ranked in the top 10 in the UK for industry income. This is based on the value of industry research income per member of academic staff.

WORLDWIDE NETWORK

When you join Heriot-Watt you become part of a global family. We have over 120,000 alumni worldwide. The Watt Club was founded in 1854 and is the oldest graduate club in the UK. Lifetime membership is automatic upon graduation from Heriot-Watt and is free to all graduates of the University.

Our Impact

A world-leading university with strong links to international business and industry, attracting leaders in ideas and solutions tackling real world challenges.

9th/
82%

WORLD-CLASS RESEARCH

The Research Excellence Framework (REF) 2014 ranked Heriot-Watt 9th university in the UK for impact with 82% of research ranked world-class.

5 GLOBAL
CAMPUSES

A truly international university with five global campuses, partners in over 100 countries and over 29,000 students studying worldwide.

9th

INDUSTRY RESEARCH

Ranked 9th in the UK for industry income, based on the value of industry research income per member of academic staff. *Times Higher Education World University Rankings 2016/17.*

86%+

GRADUATE-LEVEL JOBS

Over 86% of our postgraduates are in graduate-level jobs or further study six months after completing their programme and are actively sought by global industry.

Reputation and Rankings

Heriot-Watt is world-renowned for conducting ground-breaking research which is relevant to business and industry. We aim to find radical innovations and solutions to real world challenges for the benefit of society.

STUDYING WITH US

We will bring you into contact with leading researchers who are working on some of the most important areas for twenty-first-century society. Over 80% of academic staff are currently engaged in research at internationally recognised levels, delivering research as diverse as providing greater equality for deaf people, helping to manage risk in the insurance industry and enhancing oil extraction from the North Sea. As part of our community you will benefit from an environment focused on making a real and lasting contribution to issues that matter, and discover opportunities to make your own impact.

WORLD-LEADING RESEARCH

We have excellent facilities, highly rated teaching and world-leading research activity which together provide an exceptional learning and teaching experience. As part of a bright, committed and imaginative community of postgraduates you will have the opportunity to realise your potential by gaining the knowledge and skills you need to achieve your career aspirations.



2nd

BEST PLACE TO LIVE

Edinburgh is ranked the 2nd best place to live in the world in Deutsche Bank's global study of 47 cities.

Our Impact

TOP 20

STUDENT MIX/INTERNATIONAL STAFF

Top 20 in the UK for international student mix.
QS World University Rankings 2017/18.

Top 30 in UK for international staff.
QS World University Rankings 2017/18.

TOP 2%

TRULY GLOBAL EXPERIENCE

Top 2% of universities globally.
QS World University Rankings 2017/18.

TOP 30 + 40

UK RANKING

Top 30 in the UK out of 121 universities.
Guardian University Guide 2018.

Top 40 in the UK out of 127 universities.
Times/Sunday Times Good University Guide 2017.

Heriot-Watt has risen six places to 28th
in the UK. *2018 Complete University Guide.*

£19m

FUNDING OPPORTUNITIES

£19 million worth of scholarships,
bursaries and funding opportunities.

Why Edinburgh

Edinburgh is the most popular destination in Scotland for overseas visitors, and the second most popular in the UK as a whole.

The City of Edinburgh Council

There are around 2,400 postgraduate students studying at our Edinburgh Campus. It's a friendly, welcoming place where we encourage our community to be as integrated as possible, so you will have opportunities to meet with students from a variety of countries and cultures across the globe.

4th

MOST BEAUTIFUL CITY IN THE WORLD

Ranked the 4th most beautiful city in the world (*Rough Guide*, 2015), **Edinburgh is a stunning city and everywhere you look is picture perfect**, from the Old Town closes to the ancient volcano of Arthur's Seat.




LIVING AND STUDYING IN OUR FESTIVAL CITY

The majority of our postgraduate programmes are taught at our Edinburgh Campus, which is six miles from the city centre of Scotland's capital. The Campus itself is set in 380 acres of beautiful parkland, offering students ample space to think, play and enjoy. Jump on one of the buses that frequently depart from the Campus and you can enjoy the city of Edinburgh and all it has to offer.



3rd

SAFEST CITY IN THE WORLD



SMALL AND SAFE

Edinburgh is a compact city and was ranked as the world's **3rd safest city** in a recent YouGov poll.

A FESTIVAL CITY

Edinburgh is the **world's leading festival city** with the Edinburgh Festivals **attracting 4.5 million visitors** each year. Over **25,000 performers** take part in **3,000 events** across a variety of festivals, including the Edinburgh Festival Fringe, Edinburgh's Hogmanay, Edinburgh International Science Festival, Edinburgh International Festival and the Edinburgh International Film Festival.



HISTORY AND HERITAGE

In 1995, Edinburgh was accredited as a **World Heritage Site** by UNESCO. From the medieval Old Town and the Georgian New Town to Greyfriars Kirkyard and Blair Street Vaults, **Edinburgh is packed with fascinating, and sometimes chilling, history.**



2nd

BEST CITY IN THE UK FOR STUDENTS

STUDENT-FRIENDLY

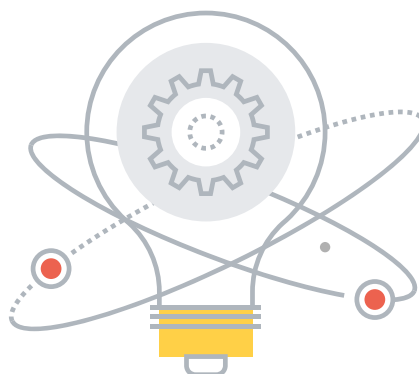
With Edinburgh ranked as **18th in the world** and **2nd in the UK** in QS Best Student Cities, it's no surprise that students make up **12% of Edinburgh's population.**

39%

OF STUDENTS ARE INTERNATIONAL

DIVERSE

39% of students at Edinburgh's universities are international, providing cultural diversity and a **welcoming atmosphere for international students.**



INNOVATION

Edinburgh has proudly been the **centre of discovery and learning** for centuries. Alexander Graham Bell, who was born in Edinburgh in 1847, invented the telephone. Today the city is **world-leading in technology, arts, medicine, science, engineering and business.**

YOU'LL NEVER BE BORED

There's a huge range of tourist attractions, from Edinburgh Castle to Edinburgh Zoo. Take to the outdoors to climb Arthur's Seat or visit Portobello beach or stay indoors to tour the fantastic museums and galleries. Explore the **hundreds of restaurants, cafes, pubs and clubs**, some rooted in history and others chic and contemporary. Go to watch music at a stadium gig or a national sporting event.

WANT TO KNOW MORE?
WATCH KAYLEIGH'S VLOG TO SEE A DAY IN THE LIFE OF A HERIOT-WATT STUDENT AT THE EDINBURGH CAMPUS:
www.hw.ac.uk/video-kayleigh

A Global University

With our roots in Scotland, our ambition and reach are truly international. A leader in transnational education, wherever we are, Heriot-Watt is a powerful driver and engine of the economy. Together with our alumni, civic community and industry partners, we transform people, society and the world we live in.

Our global campuses are situated in some of the world's most inspiring locations. Each offers superb facilities, safe surroundings and an international welcome. We offer a unique learning environment close to the exciting and vibrant cities of Edinburgh, Dubai and Kuala Lumpur.

TOUR OUR INTERNATIONAL CAMPUSES AT:
www.hw.ac.uk/virtualtours





Edinburgh

A FESTIVAL CITY WITH AN INTERNATIONAL OUTLOOK

Living in Edinburgh is exciting and fulfilling. Home to the Edinburgh International Festival and the Edinburgh Festival Fringe, it is a focal point for art, culture, comedy and drama. The Edinburgh Campus is an exceptional environment within easy reach of one of Europe's most exciting cities. Exceptional teaching facilities and our close links with industry make our Edinburgh Campus a fulfilling and stimulating environment, while our £7 million purpose-built Postgraduate Centre is a hub for advanced learning and research. Our Edinburgh Campus is truly international; over 10,500 staff and students are based here, with around a third of them coming from outside the UK.

Find out more: www.hw.ac.uk/edinburgh



Dubai

WORLD-CLASS EDUCATION TAILORED TO UAE INDUSTRY NEEDS

With a recent investment of £35 million our campus in the Dubai International Academic City is a modern, contemporary environment for around 3,400 students who are studying programmes tailored to meet the demands of the UAE and wider Middle Eastern and African economies and employment markets.

Find out more: www.hw.ac.uk/dubai



Malaysia

AN INSPIRATIONAL PLACE TO STUDY

Our state-of-the-art, £35 million Malaysia Campus in a stunning lakeside location opened in September 2014, creating opportunities for up to 4,000 students to study a range of professionally relevant programmes tailored to the needs of the Malaysian and Asian economies and employment markets.

Find out more: www.hw.ac.uk/malaysia



Scottish Borders

A WORLD-LEADING CENTRE FOR CREATIVITY

Our Scottish Borders Campus is located in the heart of the Scottish luxury textiles industry. This inspiring learning environment is a centre for excellence and an exceptional place for learning and living. The Scottish countryside setting brings its own special perspective to your experience here. A new Scottish Borders rail route opened in September 2015 giving students access to Edinburgh city centre in 50 minutes.

Find out more: www.hw.ac.uk/borders



Orkney

A 'LIVING LABORATORY' SUPPORTING THE GLOBAL MARINE INDUSTRY

The International Centre for Island Technology (ICIT) is a specialist arm of the School of Energy, Geoscience, Infrastructure and Society. With strong international industry links and collaborations, Orkney's MSc programmes are truly global. Its location in the sheltered harbour of Hamnavoe and Scapa Flow provides a 'living laboratory' which supports a wide range of research, teaching and consultancy activities in the marine, oil and gas, and fisheries sectors.

Find out more: www.hw.ac.uk/orkney

Scholarships and Funding

Heriot-Watt launched a brand new suite of Scholarships in 2017, including funding opportunities for all applicants to Postgraduate Taught Masters programmes at the UK campuses.

FOR FURTHER INFORMATION, ELIGIBILITY AND HOW TO APPLY:
www.hw.ac.uk/scholarships

Through the Chevening Scholarship I was able to achieve my dream of doing an intensive one-year postgraduate programme in the UK. It is open to ambitious leaders in developing countries all over the world from the Foreign and Commonwealth Office.

Baboucarr Sallah from the Gambia,
MSc International Finance and Economic Development
School of Social Sciences

WATCH THE VIDEO OF BABUCARR SALLAH FROM THE GAMBIA WHO RECEIVED A CHEVENING SCHOLARSHIP:
www.hw.ac.uk/video-baboucarr-scholarship



We are committed to supporting our students with an attractive and competitive range of Scholarships and Bursaries. The new Scholarship Programme fits into an already significant investment of £19 million in Scholarship provision.

Each year, hundreds of students enhance their educational experience through a variety of Heriot-Watt and externally funded Scholarships, including opportunities funded by the University's generous Alumni community, based all over the world.



HERIOT-WATT SCHOLARSHIPS AND BURSARIES

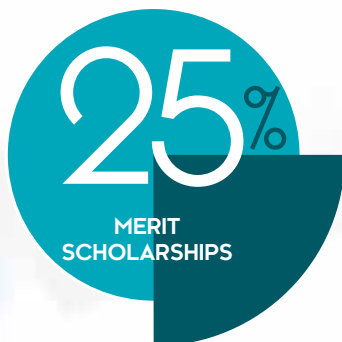
Postgraduate Scholarships for Home, Rest of UK, EU and international applicants.

Successful Scholars will benefit from a fee reduction in one of three categories:

1

Heriot-Watt Merit Scholarships:

25% fee reduction (overseas), £2,000 fee reduction (for Home/EU/RUK students)



FOR INFORMATION ON SCHOLARSHIPS AT OUR DUBAI CAMPUS:

www.hw.ac.uk/dubai/scholarships

100s
of students supported

20%

ALUMNI SCHOLARSHIPS FOR HERIOT-WATT GRADUATES



2

Heriot-Watt Excellence Scholarships:

50% fee reduction (for overseas students)



FOR INFORMATION ON SCHOLARSHIPS AT OUR MALAYSIA CAMPUS:

www.hw.ac.uk/malaysia/scholarships

100%

FEES SCHOLARSHIPS AVAILABLE FOR POSTGRADUATE STUDENTS

£10,000

MAINTENANCE GRANTS AVAILABLE AND FULL FEES PAID, FOR RESEARCH PROGRAMMES, BY JAMES WATT SCHOLARSHIPS

72 new

HERIOT-WATT SCHOLARSHIPS LAUNCHED IN 2017

3

Heriot-Watt Distinction Scholarships:

100% fee reduction (for overseas students)



FOR FURTHER INFORMATION, ELIGIBILITY AND HOW TO APPLY:

www.hw.ac.uk/scholarships

Your Career and Employability

Over 86 per cent of our postgraduate students go on to graduate level jobs or further study within six months of graduating. **Here's 10 ways in which we can help you to enjoy the same success.**



CAREER-FOCUSED DEGREES

Our degrees are **career-focused** and **relevant** to the needs of business and industry. Employers actively **seek out our graduates** as our degrees are highly regarded for their relevance to the world of work. Many of our degrees are **accredited by professional bodies**.



LINKS TO EMPLOYERS

We have excellent links with business and industry, both in the UK and internationally. We help you meet some of the **world's top employers**, who know **the strengths our graduates bring to the workplace**.

Our Impact

86%

Over 86% of our postgraduates are in graduate-level jobs or further study six months after completing their programme and are actively sought by global industry.

171

ON-CAMPUS EMPLOYER EVENTS

120

SKILLS WORKSHOPS DELIVERED

138

IN-CLASS CAREERS TALKS

6,702

GRADUATE JOBS ADVERTISED BY THE CAREERS SERVICE

4,000+

INDIVIDUAL CAREER GUIDANCE APPOINTMENTS



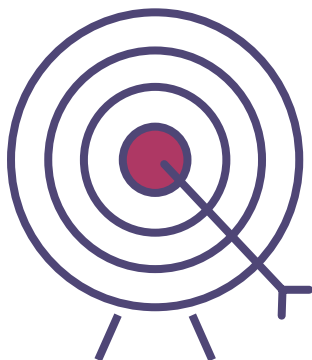
JOB APPLICATIONS SUPPORT

Our Careers Service offers **individual advice** and **group workshops** on CVs, application forms, assessment centres, selection tests and interviews.



CAREERS FAIRS

Each year we hold two **university-wide recruitment fairs** and **seven industry-specific recruitment and networking events**, giving you the chance to meet with **graduate employers** and find out about **opportunities**.

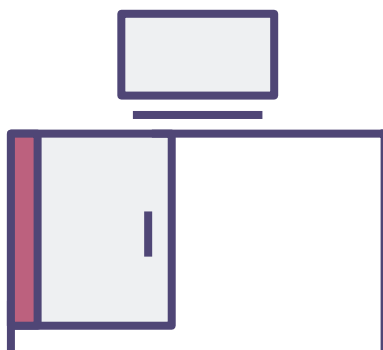


SUPPORT WITH CAREER PLANNING

Make an individual career guidance appointment with our Careers Service who can help you to identify your options, provide market intelligence, help you to develop your graduate attributes and provide individual career counselling.

WORK DURING YOUR STUDIES

Our **Careers Service** can help you to find opportunities for **part-time jobs, summer work experience and internships**, allowing you to gain invaluable experience during your studies.



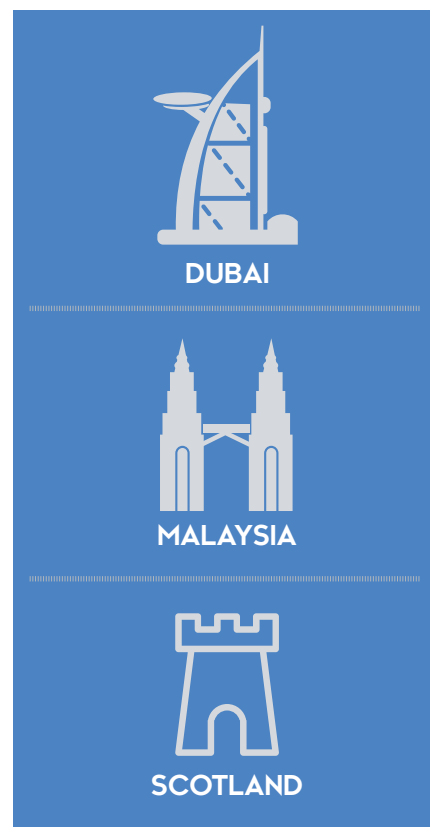
BESPOKE CAREERS ADVICE

Each School has a **dedicated careers advisor** who collaborates with lecturers to integrate a **programme of events** into our degree programmes designed to equip you with the skills you will need to **plan and implement** your **career choice**.



- *Heriot-Watt has a reputation for producing pragmatic 'can do' graduates and many of those have gone on to carve out a successful career with Shell. We have always enjoyed contributing to the University courses and careers fairs through the efforts of our Campus Ambassador team but now we have strengthened our ties with the University even further by funding the Shell Centre for Exploration Geoscience and by elevating Heriot-Watt to become one of our top target universities for recruitment.* ●●

Paul Garnham, Shell's Campus Ambassador
Lead for Heriot-Watt University, Aberdeen



INTERNATIONAL RELATIONSHIPS

We have campuses in **Dubai, Malaysia**, and **Scotland** and about a third of students at our Edinburgh Campus come from countries outside of the UK. This **international ethos** ensures you meet a very broad range of people to help you to achieve **a global perspective through international links and friendships**.

JOIN THE WATT CLUB

Founded in 1854, the **Watt Club** is the UK's **oldest Higher Education Alumni association** with over **120,000 alumni worldwide**. Becoming a graduate of Heriot-Watt University gives you **access to this international network**.

CONTINUED SUPPORT AFTER GRADUATION

The Careers Service will continue to offer support and guidance for up to two years after you graduate, helping with those all-important first steps into the world of employment following completion of your studies.

www.hw.ac.uk/careers

Pioneering Research with Global Impact

Making a Difference in the Real World

Founded in 1821 as the world's first mechanics institute, Heriot-Watt has a rich heritage and an established reputation as a leading research-led university. Here we feature five of our leading academics and an insight into the real-life challenges they are currently tackling to make a difference in the real world. Leading global research informs the education we provide.



Our Impact

9th/ 82%

WORLD-CLASS RESEARCH

The Research Excellence Framework (REF) 2014 ranked Heriot-Watt 9th university in the UK for impact with 82% of research ranked world-class.

80%+

RESEARCH-LED EDUCATION

Over 80% of academic staff are currently engaged in research at internationally recognised levels delivering research as diverse as providing greater equality for deaf people, helping to manage risk in the insurance industry and enhancing oil extraction from the North Sea.

Real World Education

Today, our communities of scholars come from across the world for a purpose: to deliver innovation and educational excellence in business, engineering, design and the physical, social and life sciences. A research-informed curriculum focuses on delivering practical solutions to real world problems and creating solutions that have a positive impact on society worldwide.

As a university keenly focused on delivering excellence in research, we have significantly contributed to the development of research pooling. This initiative can enhance your studies and provide opportunities to meet people who can support your career aspirations. Providing collaborative opportunities for research and training across international universities creates an environment that is highly attractive to leading researchers around the world.

For more information about research please visit www.hw.ac.uk/research.htm

LEADERS IN IDEAS AND SOLUTIONS

Driving Water Resource Management

Professor Adebayo Adelaye

Professor Adebayo Adelaye (Bayo) of the Institute of Infrastructure and Environment (IIE) in the **School of Energy, Geoscience, Infrastructure and Society** tells us about his work on water resources and the impact of climate change.

Q: Can you describe in a nutshell what your specialist research is focused on?

A: I research the planning, management and operation of water resources systems with special focus on the impact that projected climate change is having on the security and sustainability of these systems.

Q: How is that work influencing tomorrow's world on an international platform?

A: Water is vital to human existence and, with an estimated 1.9 billion people worldwide lacking this vital resource in adequate quality and quantity, the need to properly manage the resource has never been greater. Climate change is projected to affect the future availability of water and its quality, implying that if it is not properly managed, feeding the growing world population and providing them with good quality drinking water, while at the same time meeting the needs of the environment, especially in the developing world, will become more and more difficult.

Q: How has working with industry made an impact on your work?

A: Industry and academia must work together if the global water problems are to be tackled effectively. Collaboration with industry has ensured that my research is addressing the needs of industry and those of wider society, thus ensuring that it continues to deliver the impact that research funders are insistent upon. On education and training, involving industry through guest lectures, site visits, provision of high-quality data on full-scale industrial installations, etc., has ensured that my students are able to relate theory to practice and through this become better practitioners in their own right.

Q: What do you think gives Heriot-Watt postgraduates that extra edge in their chosen field of expertise?

A: The uniquely global nature of Heriot-Watt University ensures that any student studying here is exposed to the international dimension of problems in their chosen field. For example, while water is universally important, its situation is different from one country to another and being able to study together with students from different parts of the world and share experiences is, to me, the most effective way of appreciating the international dimensions of water management. Also, because Heriot-Watt is a research-led university, students here benefit from the outcomes of cutting-edge, world-leading research that get incorporated into postgraduate learning materials. This is very advantageous for those going into either high-end industry jobs or further research studies for their PhD.

Q: What advice would you give to a postgraduate research student considering Heriot-Watt?

A: Go for it as you are unlikely to get anything that gives you better value for your money in terms of UK education! Yes, you will be made to work hard but you will soon find out that it is the best choice you ever made.

DISCOVER MORE ABOUT THE SCHOOL OF ENERGY, GEOSCIENCE, INFRASTRUCTURE AND SOCIETY:

www.hw.ac.uk/egis

Graduate Profile



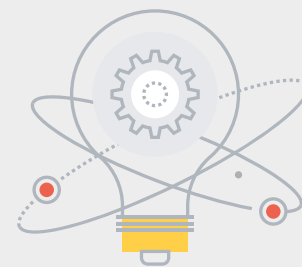
Zak Ritchie studied with Bayo at Heriot-Watt. He graduated with an MSc in Water Resources in 2012.

He cites Bayo's unwavering enthusiasm and passion for his area of expertise as a real motivation to him to advance in this sector. Today Zak is a Senior Hydrologist and Civil Engineer with SLR Consulting in Edinburgh. SLR offers a wide range of advisory and environmental consulting services to a diverse base of international business, regulatory and government clients. From acoustics to waste management, they provide advice and support on a wide range of strategic and project-specific issues.

WANT TO KNOW MORE?

www.hw.ac.uk/profile-zak-ritchie





RESEARCH NEWS

The simulated effect of projected climate change on the security of available water resources is dramatic. Research has shown that with improved operational management of existing water resources and facilities, much of this effect can be neutralised, thus effectively removing the need for expensive and environmentally damaging new developments.



Climate change is projected to affect the future availability of water and its quality, implying that if it is not properly managed, feeding the growing world population and providing them with good quality drinking water, while at the same time meeting the needs of the environment, especially in the developing world, will become more and more difficult.

Professor Adebayo Adeloje,
School of Energy, Geoscience, Infrastructure and Society

Pioneering Cell Biology

Professor Rory Duncan

Pioneering research in cell biology is set to deepen our knowledge of the causes of a wide range of diseases. Heriot-Watt is spearheading the campaign from its Life Science Interface Laboratory located within the Institute of Biological Chemistry, Biophysics and Bioengineering (IB3) in the **School of Engineering and Physical Sciences**. Professor Rory Duncan, Head of IB3, explains how.

Q: What is the main challenge you face in cell biology today?

A: All of our work at Heriot-Watt right now is aimed at trying to characterise how proteins act in living cells. Proteins are the 'machines' that drive cells, and biology is based entirely on which proteins interact with which other proteins, and where and when. Until recently, biologists haven't had the tools to visualise single proteins inside cells. Whereas cells are in the order of 5 to 10 microns in diameter, single proteins are just nanometres in size – and there are millions of them in a single cell. To try to explain the scales we are looking at – the molecules we can see inside cells are as small to us as Jupiter is large!

Q: How is your work today influencing tomorrow's world?

A: Our Life Science Interface Laboratory is recognised worldwide as a centre of excellence in the imaging of molecular events in cells. In 2013, we were extremely fortunate to receive £2.5 million courtesy of the MRC's Next Generation in Optical Microscopy Initiative to take our work a step further. The award has allowed us to set up a new research centre where we can investigate the causes of disease at molecular level. These are studies that could lead to pioneering biomedical discovery and new therapies.

The Edinburgh Super Resolution Imaging Consortium (ESRIC) is a unique resource that's unparalleled in the UK, which we run in partnership with the University of Edinburgh's Institute of Genetics and Molecular Medicine (IGMM). ESRIC is equipped with a range of highly advanced microscopes capable of nanometre-resolution imaging in living cells, enabling us to at last visualise not only single proteins but also hundreds of thousands of proteins in the cell.

Q: Is a multidisciplinary approach important to your work?

A: ESRIC brings together biomedical scientists from IGMM with experts from IB3 and across our disciplines of engineering, mathematics and physics to create the interdisciplinary setting that's vital to our work. Although I'm a cell biologist myself, I specifically moved to Heriot-Watt to join a physics environment; it's the physicists who will create the tools that people like me need in order to address diabetes, for example. Our graduates go on to some high-profile international positions, using the skills they have acquired with us (see profile). We publish in the highest-ranking journals, like *Nature* – this is the tangible advantage of inter-disciplinarity – new discovery, made in new ways.

Q: What gives Heriot-Watt postgraduate students the edge in this field?

A: All of the research that we do here is very high-profile and it attracts the interest of a great many scientists globally. Heriot-Watt is an extremely vibrant place to be, and we are uniquely placed with the fantastic resources and expertise profile that ESRIC offers. Postgraduates on our team are equipped with a broad-based expertise that will allow them to work anywhere in the world in this area of research.

In addition, our students all attend a summer school that attracts delegates from all over the world to learn from the best international researchers in the field, who fly in for the occasion. We even attract Nobel Prize-winners to pass on their expertise to lucky students!

Find yourself at the leading edge of research and at the forefront of innovation. Discover in the School of Engineering and Physical Sciences the kind of international expertise that supports careers on a global scale.

**WANT TO KNOW MORE?
WATCH RORY'S VIDEO INTERVIEW:**
www.hw.ac.uk/video-rory-duncan

**DISCOVER MORE ABOUT THE
SCHOOL OF ENGINEERING
AND PHYSICAL SCIENCES:**
www.hw.ac.uk/eps

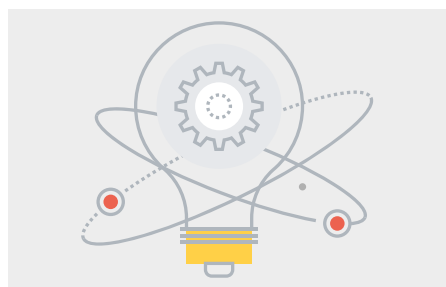
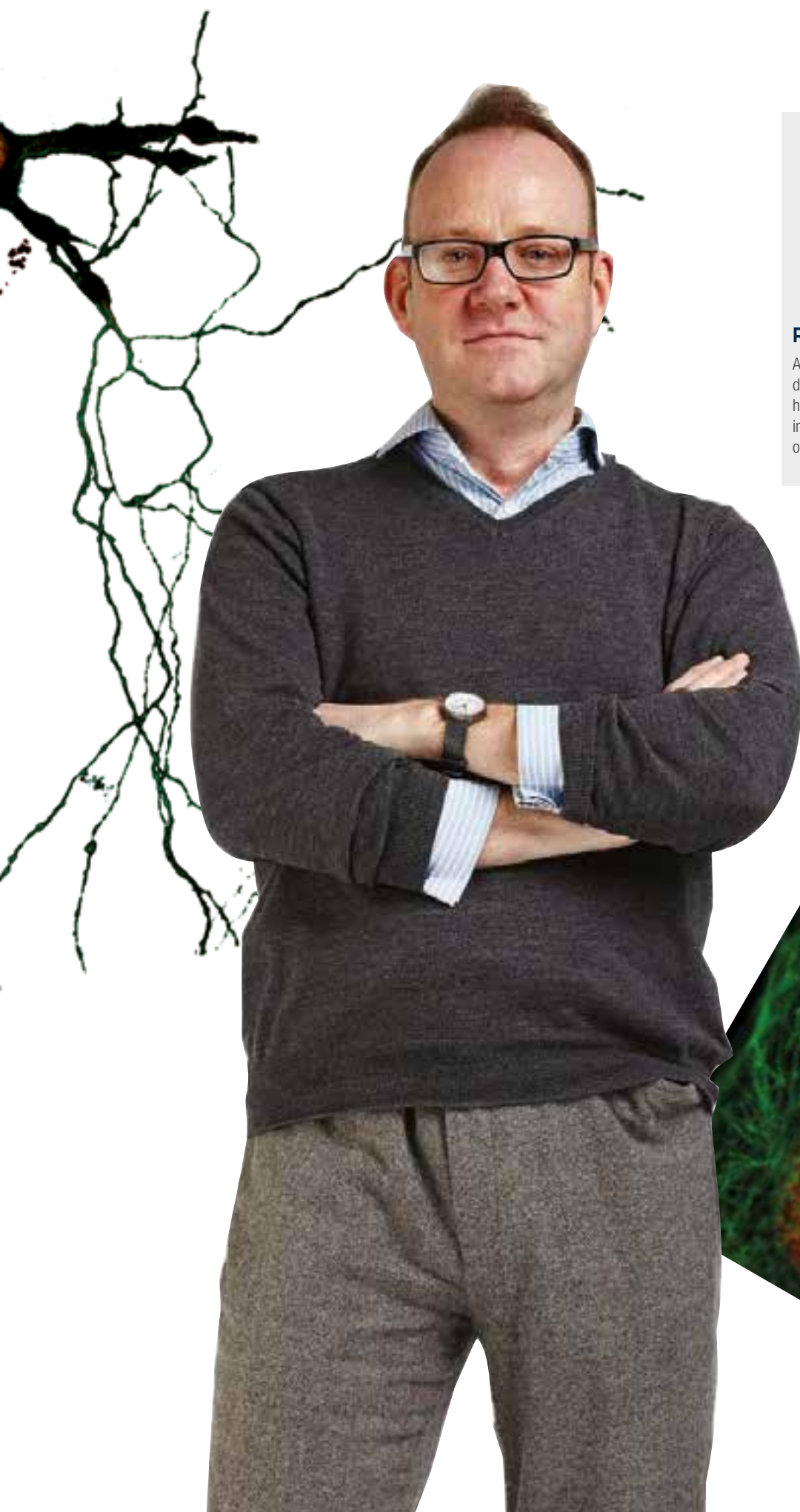
Graduate Profile



Dr Katia Hiersemenzel studied with Rory Duncan at Heriot-Watt. Today, she is an Advanced Imaging Application Specialist for Leica Microsystems Global for Europe, Middle East and Africa.

Her role is part of the company's Optical Coherence Tomography (OCT) system, a recently established part of the product range of Leica Microsystems. OCT is the optical analogue of ultrasound and has a particular application to eye research. As an Application Specialist for the life science sector she provides the technical knowhow about the product and its bio-imaging capacity.

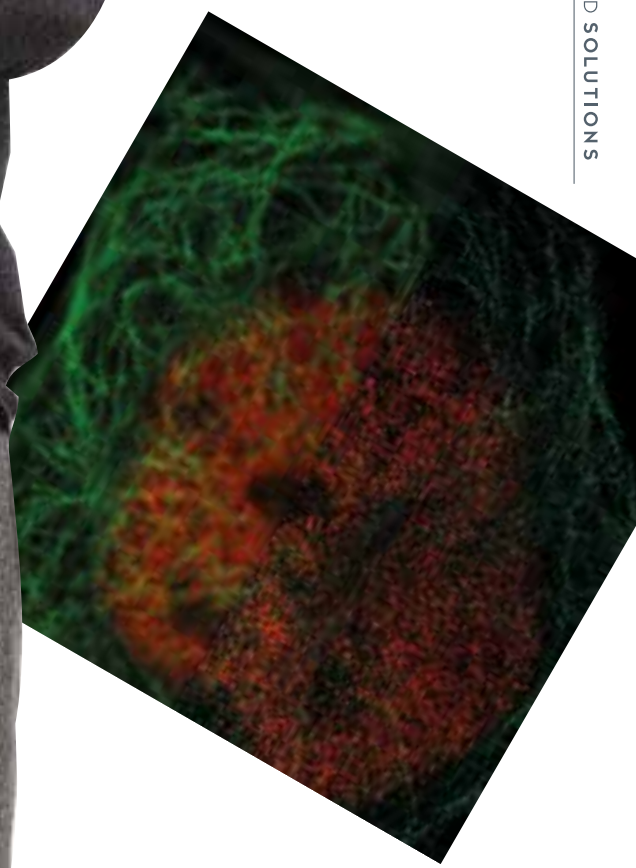
WANT TO KNOW MORE?
www.hw.ac.uk/profile-katia-hiersemenzel



RESEARCH NEWS

A recent breakthrough in LED technology that can diagnose and monitor cataracts before they form has the potential to revolutionise eye care in our increasingly ageing population and take pressure off the NHS.

LEADERS IN IDEAS AND SOLUTIONS



Revolutionising Robotics

Professor David Lane CBE

Professor David Lane is Director of the Edinburgh Centre for Robotics, a joint venture with the University of Edinburgh's Informatics and Engineering team. Here he talks about pioneering robotics research that will revolutionise the global economy over the next 20 years, spanning the nuclear, space and the offshore industries, transport, healthcare and manufacturing.

Q: Can you describe in a nutshell what your research is focused on?

A: New generations of smart robots are revolutionising how tasks are carried out. At the Edinburgh Centre for Robotics we are researching new ways to make robots interact with the environments around them, with people, with each other and with themselves.

Q: Can you explain a bit more?

A: They are sensing, world modelling, planning and control architectures that can make robots persistently autonomous, operating in unknown environments for extended periods. They investigate shared autonomy where people and robots operate in highly synergistic ways to complete tasks. They observe nature to develop bio-inspired systems that sense and process data using methods that have evolved in biological organisms.

Heriot-Watt is a founding member of the EPSRC UK Robotics and Autonomous Systems Network (UK-RAS Network). The Network brings together the UK's core academic capabilities in robotics innovation under national coordination for the first time and encourages academic and industry collaborations that will accelerate the development and adoption of robotics and autonomous systems.

FOR MORE INFORMATION GO TO:
www.edinburgh-robotics.org

TO APPLY GO TO:
www.hw.ac.uk/rais

Q: How has working with industry made an impact on your work?

A: The Centre is supported by over 40 industrial business partners which is critical to the work we do here. Our research operations include the Robotarium, a state-of-the-art equipment facility for research and knowledge exchange, and the EPSRC Centre for Doctoral Training in Robotics and Autonomous Systems, producing 100 innovation-ready PhD graduates who go straight into industry.

Q: Can you give us an example of how your work is making an impact in the real world?

A: In a collaboration with NASA and the University of Edinburgh, we are working on improving the physical and computational abilities of a 1.8 metre, 125 kg humanoid robot called Valkyrie, the only robot of its type in Europe, and one of only three prototypes in the world.

NASA hopes to equip Valkyrie to go to the Red Planet many years before astronauts are able to make the journey, for pre-deployment tasks and to maintain assets on Mars. Valkyrie's human-like shape is designed to enable it to work alongside people, or carry out high-risk tasks in place of people.

DISCOVER MORE ABOUT THE
SCHOOL OF MATHEMATICAL AND
COMPUTER SCIENCES:

www.hw.ac.uk/macs

DISCOVER MORE ABOUT THE
SCHOOL OF ENGINEERING
AND PHYSICAL SCIENCES:

www.hw.ac.uk/eps

Graduate Profile



Yanchao Yu graduated with an MSc Software Engineering, from the School of Mathematical and Computer Sciences. He is currently doing a PhD in Natural

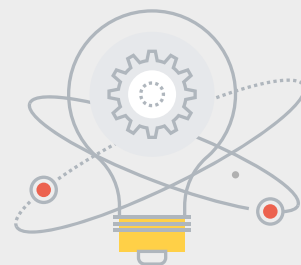
Language Processing. For him Heriot-Watt's appeal lay in the beautiful campus and also the full 'student experience' of living on campus with students from around the world.

"Since beginning my studies here I've learnt that Heriot-Watt has an incredible reputation for courses and research laboratories related to Robotics/ Artificial Intelligence. These encouraged and supported me to continue my PhD studies here. My current PhD research lies in how a robot can interact with real humans in natural language."

WANT TO KNOW MORE?

www.hw.ac.uk/profile-yanchao-yu





RESEARCH NEWS

Heriot-Watt co-hosted the European Robotics Forum 2017 attended by over 800 European industrialists and researchers engaged in technology development and translation. The move demonstrates our commitment to driving innovation that translates technology from research to new products and services. New industries are being created, with robotics providing the essential arms, legs and sensors that bring big data and artificial intelligence out of the laboratory and into the real world.



In a collaboration with NASA and the University of Edinburgh, we are working on improving the physical and computational abilities of a 1.8 metre, 125 kg humanoid robot called Valkyrie, the only robot of its type in Europe, and one of only three prototypes in the world.

Professor David Lane CBE,
School of Engineering and Physical Sciences

Innovative Textiles Design

Dr Sara Keith

Dr Sara Keith is Deputy Head of Research in the **School of Textiles and Design**. Here she tells us about her specialist research in the field of sustainable, naturally dyed textiles.

Q: Can you describe in a nutshell what your specialist research is focused on?

A: My field of specialism is sustainable textile dyeing, focusing on the potential of natural dye extracted from the food and drink industry as a by-product. Mordants are traditionally metal salts utilised to stabilise natural colour, and part of my research is to find more environmentally friendly solutions to anchor natural dye.

Q: How is that work influencing tomorrow's world on an international platform?

A: Chemical textile dyes are responsible for pollution in many different countries across the world and if a viable alternative can be found this would help to keep watercourses clean. Those countries that do use natural dye on a large scale often also use harmful mordants; part of my research is to communicate a cleaner approach to colouring textiles.

Q: How has working with industry made an impact on your work?

A: Some research that I do is reactive and answers industry challenges. However, most of the research I am involved with addresses how the textile industry can adapt and work towards a more sustainable future, economically as well as environmentally. The future of cloth colouration requires industry to play an active role in adopting cleaner processes.

Q: What do you think gives Heriot-Watt postgraduates that extra edge in their chosen field of expertise?

A: Exceptionally strong links to industry and the international nature of Heriot-Watt University contribute to a unique hothouse for research and learning to flourish.

Q: What advice would you give to a postgraduate student considering Heriot-Watt?

A: Think about the research areas within your discipline and identify the staff that are best suited to supervise your project. Heriot-Watt University has strategic research themes and these are integral in research-informed teaching.

DISCOVER MORE ABOUT THE SCHOOL OF TEXTILES AND DESIGN:

www.hw.ac.uk/sotd

Graduate Profile



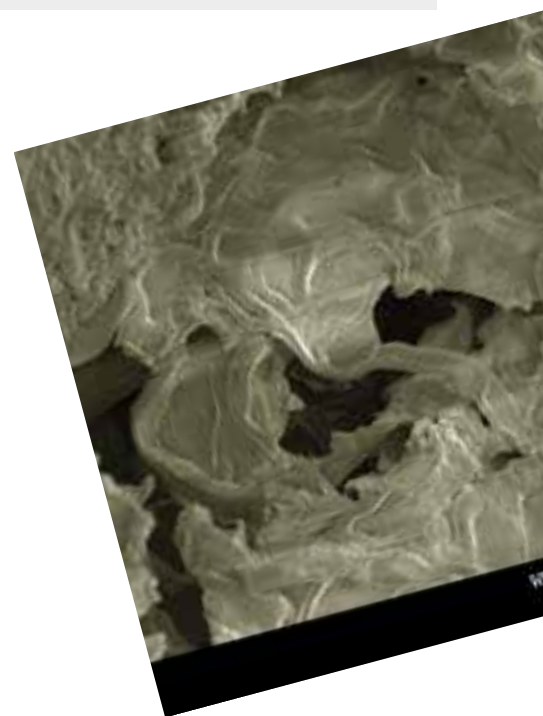
Temitope (Tope) Mary Orororo is from Nigeria and is a Masters student in Fashion and Textiles Design at the School of Textiles and Design in Galashiels in the

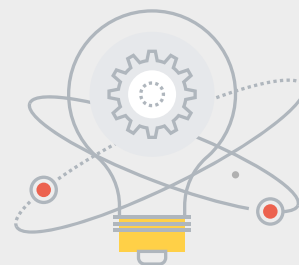
Scottish Borders. For her Heriot-Watt's appeal lay in the facilities at the Borders Campus and the simplicity of the town of Galashiels. She also feels her Masters degree will give her a real edge in her chosen field.

"The facilities at the Borders Campus are amazing with tutors who are very accessible and knowledgeable. They widen your horizon to possible researchable subjects. At the end of the programme, you are ready and confident to pursue your personal goals and vision."

WANT TO KNOW MORE?

www.hw.ac.uk/profile-tope-orororo





RESEARCH NEWS

Pioneering research into 'psychotextiles' has the potential to transform product manufacturing, engineering and the teaching of art and design. 'Visual medicine' could also lead to alternatives to antidepressants in the medical world.

The international nature of Heriot-Watt University, embedded in discipline excellence, creates a unique hothouse for research and learning to flourish.

Dr Sara Keith,
School of Textiles and Design



Tackling Gender Inequality

Dr Kate Sang

Dr Kate Sang is Associate Professor of Business Management in the **School of Social Sciences**. Here she tells us about the challenges of gender inequality in the workplace.

Q: Can you describe in a nutshell what your specialist research is focused on?

A: My research explores the persistence of gender inequalities in the workplace, revealing how gender intersects with disability, ethnicity and migratory status. I am particularly interested in male dominated sectors such as the construction industry, transport and academia.

Q: How is that work influencing tomorrow's world on an international platform?

A: By working with employers to develop interventions to improve the working lives of disabled employees, through new policies, representation and working with trade unions. I have also worked with the Scottish Parliament on disability, women's health and poverty issues. The aim of my research is to work with policy makers, employers and trade unions to create workplaces where all employees are able to reach their full potential.

Q: How has working with industry made an impact on your work?

A: I work with industry, the public sector and policy makers to develop understanding of the lived experiences of employees so I can develop real world solutions to ensure a fully inclusive workplace.

Q: What do you think gives Heriot-Watt postgraduates that extra edge in their chosen field of expertise?

A: The opportunity to study and work with global leaders in their field, so students enter the workplace with cutting-edge knowledge rooted in a strong evidence base.

Q: What advice would you give to a postgraduate student considering Heriot-Watt?

A: Your lecturers are here to help and we are excited about working with you – so always ask if you need any help or advice. Also make use of the variety of resources including the library – the more reading you do, the stronger your own work will be.

DISCOVER MORE ABOUT THE SCHOOL OF SOCIAL SCIENCES:

www.hw.ac.uk/soss

Graduate Profile



Rebecca Stirzaker graduated with an MSc International Business Management with HRM from the School of Social Sciences.

Here she gives advice to anyone thinking about choosing Heriot-Watt as an option for postgraduate study.

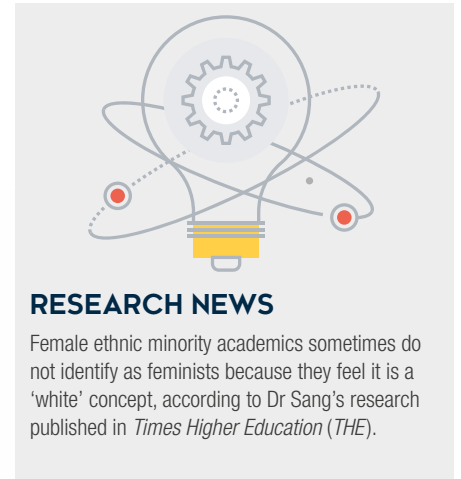
“At Heriot-Watt, you have the opportunity to enjoy a truly international experience with the University ranked in the world's top 10 universities for the international mix of students. Teaching provided is by world-class academic professionals and dedicated support staff provide excellent care. Overall, if you are looking for a world-class international postgraduate student experience, Heriot-Watt should be your choice.”

WANT TO KNOW MORE?

www.hw.ac.uk/profile-rebecca-stirzaker

My research is influencing tomorrow's world through working with employers to develop interventions to improve the working lives of disabled employees, through new policies, representation and working with trade unions. I have also worked with the Scottish Parliament on disability, women's health and poverty issues. The aim of my research is to work with policy makers, employers and trade unions to create workplaces where all employees are able to reach their full potential.

Dr Kate Sang,
School of Social Sciences



RESEARCH NEWS

Female ethnic minority academics sometimes do not identify as feminists because they feel it is a 'white' concept, according to Dr Sang's research published in *Times Higher Education (THE)*.



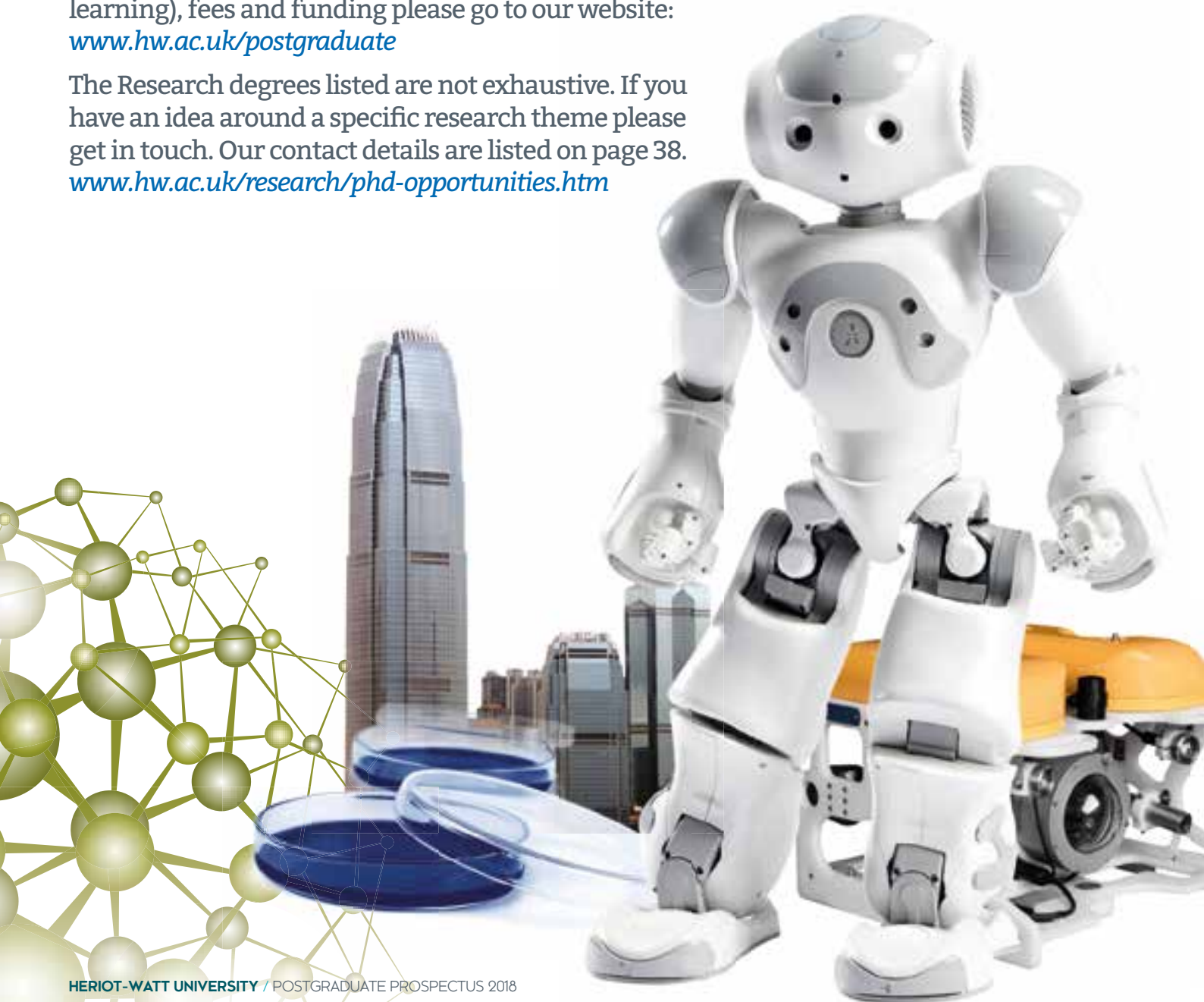
What Can I Study at Heriot-Watt

All of our taught programmes and research degrees are grouped into subject tables on the following pages with an indication of the level of award. To get more detailed information on the structure of our programmes including course content, entry requirements, modes of delivery (full-time/part-time/independent distance learning), fees and funding please go to our website:

www.hw.ac.uk/postgraduate

The Research degrees listed are not exhaustive. If you have an idea around a specific research theme please get in touch. Our contact details are listed on page 38.

www.hw.ac.uk/research/phd-opportunities.htm



School of Energy, Geoscience, Infrastructure and Society

Building, Planning and Urban Design

www.hw.ac.uk/pg-building

Programme	Level	Award
T Architectural Project Management (By Distance Learning only)	Taught	MSc/Diploma
T Building Conservation (Technology and Management) (By Distance Learning only)	Taught	MSc/Diploma
T Building Services Engineering (Also by Distance Learning)	Taught	MSc/Diploma
T Facilities Management (Dubai Campus)	Taught	MSc/Diploma
T Sustainable Building Design (Also by Distance Learning)	Taught	MSc/Diploma
T Sustainable Urban Management (Also by Distance Learning)	Taught	MSc/Diploma
T Urban and Regional Planning (Also by Distance Learning)	Taught	MSc/Diploma
T Urban Strategies and Design	Taught	MSc/Diploma
R Acoustics and Noise Control	Research	PhD/MPhil/MSc
R Commercial Property Markets	Research	PhD/MPhil/MSc
R Construction Management and Innovation	Research	PhD/MPhil/MSc
R Eco-housing	Research	PhD/MPhil/MSc
R Health and Wellbeing in the Built Environment	Research	PhD/MPhil/MSc
R Housing Policy, Housing Management and Governance	Research	PhD/MPhil/MSc
R Migration and Place	Research	PhD/MPhil/MSc
R Sustainability and Carbon Management	Research	PhD/MPhil/MSc
R Sustainable Materials	Research	PhD/MPhil/MSc
R Sustainable Transport	Research	PhD/MPhil/MSc
R Urban Design and Planning	Research	PhD/MPhil/MSc
R Urban Energy	Research	PhD/MPhil/MSc
R Water Conservation and Drainage	Research	PhD/MPhil/MSc

Programmes you may also be interested in:

- Interior Architecture and Design MA/Diploma
- Real Estate and Planning MSc/Diploma

Civil/Safety/Water Engineering

www.hw.ac.uk/pg-civil

Programme	Level	Award
T Civil Engineering (By Distance Learning only)	Taught	MSc/Diploma
T Civil Engineering and Construction Management (Also by Distance Learning and Dubai)	Taught	MSc/Diploma
T Safety and Risk Management (By Distance Learning only)	Taught	MSc/Diploma
T Safety, Risk and Reliability Engineering (By Distance Learning only)	Taught	MSc/Diploma
T Structural and Foundation Engineering (Also by Distance Learning)	Taught	MSc/Diploma
T Water and Environmental Management (Also by Distance Learning)	Taught	MSc/Diploma
T Water Technology and Desalination (By Distance Learning only)	Taught	MSc/Diploma
R Civil Engineering Materials	Research	PhD/MPhil/MSc
R Geomechanics	Research	PhD/MPhil/MSc
R High-Speed Railways	Research	PhD/MPhil/MSc
R Structures	Research	PhD/MPhil/MSc
R Systems, Sustainability and Society	Research	PhD/MPhil/MSc
R Water Management	Research	PhD/MPhil/MSc

Programmes you may also be interested in:

- Petroleum Engineering MSc
- Sustainability Engineering MSc/Diploma
- Water Conservation and Drainage PhD/MPhil/MSc

Construction Management and Surveying www.hw.ac.uk/pg-construction

	Programme	Level	Award
T	Commercial Management and Quantity Surveying (Also by Distance Learning and Dubai/Malaysia)	Taught	MSc/Diploma
T	Construction Project Management (Also by Distance Learning and Dubai/Malaysia)	Taught	MSc/Diploma

Energy and Renewables

www.hw.ac.uk/pg-energy

	Programme	Level	Award
T	Renewable Energy Development (Orkney Campus and by Distance Learning)	Taught	MSc/Diploma

Programmes you may also be interested in:

- Energy MSc/Diploma
- Energy with Entrepreneurship MSc
- Oil and Gas Technology MSc
- Renewable Energy Engineering MSc/Diploma
- Renewable Energy and Distributed Generation MSc/Diploma
- Renewable Energy and Smart Grids MSc
- Smart Grid Demand Management MSc

Food Science, Health and Nutrition

www.hw.ac.uk/pg-food

	Programme	Level	Award
T	Biotechnology	Taught	MSc/Diploma
T	Food and Beverage Science	Taught	MSc/Diploma
T	Food Science and Nutrition	Taught	MSc/Diploma
T	Food Science, Safety and Health	Taught	MSc/Diploma
R	Food and Nutrition	Research	PhD/MPhil/MSc
R	Health and Exercise	Research	PhD/MPhil/MSc
R	Microbial Physiology	Research	PhD/MPhil/MSc
R	Nano-Safety Research	Research	PhD/MPhil/MSc

Programmes you may also be interested in:

- Brewing and Distilling MSc/Diploma (Also by Distance Learning)
- Health and Wellbeing in the Built Environment PhD/MPhil/MSc

Marine, Environment and Climate Change

www.hw.ac.uk/pg-marine

	Programme	Level	Award
T	Climate Change: Impacts and Mitigation	Taught	MSc/Diploma
T	Climate Change: Managing the Marine Environment	Taught	MSc/Diploma
T	Integrative Marine Data Skills (Orkney Campus)	Taught	MSc/Diploma
T	Marine Biodiversity and Biotechnology	Taught	MSc/Diploma
T	Marine Planning for Sustainable Development (Orkney Campus)	Taught	MSc/Diploma
T	Marine Renewable Energy (Orkney Campus and by Distance Learning)	Taught	MSc/Diploma
T	Marine Resource Development and Protection	Taught	MSc/Diploma
T	Marine Science	Taught	MSc/Diploma
R	Abandonment of Offshore Installations	Research	PhD/MPhil/MSc
R	Coral Ecosystems	Research	PhD/MPhil/MSc
R	Coastal Zone Management	Research	PhD/MPhil/MSc
R	Ecotoxicology and Immunology	Research	PhD/MPhil/MSc
R	Energy Planning	Research	PhD/MPhil/MSc
R	Environmental Sciences	Research	PhD/MPhil/MSc

R	IT Applications in Peripheral Areas	Research	PhD/MPhil/MSc
R	Marine Conservation	Research	PhD/MPhil/MSc
R	Marine Vertebrates	Research	PhD/MPhil/MSc
R	Marine Microbial Ecology	Research	PhD/MPhil/MSc
R	Marine Biodiversity	Research	PhD/MPhil/MSc
R	Marine Biotechnology	Research	PhD/MPhil/MSc
R	Seabed Mapping	Research	PhD/MPhil/MSc
R	Tidal Current Energy Generation	Research	PhD/MPhil/MSc

Programmes you may also be interested in:

- Biotechnology MSc/Diploma
- Oilfield Chemistry PhD/MPhil/MSc
- Renewable Energy Development MSc/Diploma

Petroleum Engineering and Geoscience

www.hw.ac.uk/pg-petroleum

Programme	Level	Award
T Applied Petroleum Geoscience (Also by Distance Learning)	Taught	MSc
T Petroleum Engineering (Also by Distance Learning and Dubai/Malaysia)	Taught	MSc
T Reservoir Evaluation and Management	Taught	MSc
R Applied Geoscience	Research	PhD/MPhil/MSc
R Carbon Capture and Storage (CCS)	Research	PhD/MPhil/MSc
R Carbonate Reservoirs	Research	PhD/MPhil/MSc
R Enhanced Oil Recovery and CO ₂ Solutions	Research	PhD/MPhil/MSc
R Estuary and Coastal Geosciences	Research	PhD/MPhil/MSc
R Flow Assurance and Scale Team (FAST)	Research	PhD/MPhil/MSc
R Geomaterials	Research	PhD/MPhil/MSc
R Hydrates and PVT	Research	PhD/MPhil/MSc
R Oil and Gas Innovation	Research	PhD/MPhil/MSc
R Oilfield Chemistry	Research	PhD/MPhil/MSc
R Pore-Scale Modelling	Research	PhD/MPhil/MSc
R Production Engineering and Technology	Research	PhD/MPhil/MSc
R Reservoir Geophysics	Research	PhD/MPhil/MSc
R Uncertainty Quantification	Research	PhD/MPhil/MSc

Programmes you may also be interested in:

- Applied Petroleum Geoscience MSc
- Oil and Gas Technology MSc
- Petroleum Engineering MSc
- Reservoir Evaluation and Management MSc

Real Estate, Housing and Social Policy

www.hw.ac.uk/pg-realestate

Programme	Level	Award
T Real Estate and Planning (Also by Distance Learning)	Taught	MSc/Diploma
T Real Estate Investment and Finance (Also by Distance Learning and Dubai)	Taught	MSc/Diploma
T Real Estate Management and Development (Also by Distance Learning and Dubai)	Taught	MSc/Diploma
R Affordability, Housing Markets and Private Renting	Research	PhD/MPhil/MSc
R Commercial Property Markets	Research	PhD/MPhil/MSc
R Comparative Housing and Urban Research	Research	PhD/MPhil/MSc
R Diversity/Black and Minority Ethnic Communities	Research	PhD/MPhil/MSc
R Homelessness and Social Exclusion	Research	PhD/MPhil/MSc
R Housing Design, Development and Regeneration	Research	PhD/MPhil/MSc

R	Housing Policy, Housing Management and Governance	Research	PhD/MPhil/MSc
R	Migration and Place	Research	PhD/MPhil/MSc
R	Neighbourhoods and Deprivation	Research	PhD/MPhil/MSc

Programmes you may also be interested in:

- Urban and Regional Planning MSc/Diploma
- Urban Strategies and Design MSc/Diploma

School of Engineering and Physical Sciences

Biological Chemistry, Biophysics and Bioengineering

www.hw.ac.uk/pg-biological-chemistry

	Programme	Level	Award
T	Human Health and Disease	Taught	MSc/Diploma
R	Institute of Biological Chemistry, Biophysics and Bioengineering	Research	PhD/MPhil/MSc

Brewing and Distilling

www.hw.ac.uk/pg-brewing

	Programme	Level	Award
T	Brewing and Distilling with Entrepreneurship	Taught	MSc
T	Brewing and Distilling (Also by Distance Learning)	Taught	MSc/Diploma
R	Cereal Science	Research	PhD/MPhil/MSc
R	International Centre for Brewing and Distilling (ICBD)	Research	PhD/MPhil/MSc
R	Yeast Research	Research	PhD/MPhil/MSc

Chemical Sciences

www.hw.ac.uk/pg-chemical

	Programme	Level	Award
R	Institute of Chemical Sciences	Research	PhD/MPhil/MSc

Energy and Renewables

www.hw.ac.uk/pg-energy

	Programme	Level	Award
T	Energy (Also by Distance Learning and Dubai/Malaysia)	Taught	MSc/Diploma
T	Energy with Entrepreneurship	Taught	MSc
T	Oil and Gas Technology	Taught	MSc
T	Renewable Energy Engineering (Also in Dubai and Malaysia)	Taught	MSc/Diploma
T	Renewable Energy and Distributed Generation	Taught	MSc/Diploma
T	Renewable Energy and Smart Grids	Taught	MSc
T	Smart Grid Demand Management	Taught	MSc
R	Energy Planning	Research	PhD/MPhil/MSc
R	Environmental Sciences	Research	PhD/MPhil/MSc
R	IT Applications in Peripheral Areas	Research	PhD/MPhil/MSc

Programmes you may also be interested in:

- Renewable Energy Development MSc/Diploma
- Marine Renewable Energy MSc/Diploma

Mechanical, Process and Energy Engineering

www.hw.ac.uk/pg-mechanical

Programme	Level	Award
T Advanced Mechanical Engineering	Taught	MSc
T Sustainability Engineering	Taught	MSc/Diploma
R Institute of Mechanical, Process and Energy Engineering	Research	PhD/MPhil/MSc

Photonics and Quantum Sciences

www.hw.ac.uk/pg-photonics

Programme	Level	Award
T Photonics and Optoelectronic Devices	Taught	MSc
R Institute of Photonics and Quantum Sciences	Research	PhD/MPhil/MSc/EngD

Robotics

www.hw.ac.uk/pg-robotics

Programme	Level	Award
T Robotics, Autonomous and Interactive Systems	Taught	MSc
T Vision Image and Robotics (VIBOT)	Taught	MSc
R Affective Autonomous Agents	Research	PhD/MPhil
R Artificial Intelligence	Research	PhD
R Human Robot Interaction	Research	PhD
R Robotics	Research	PhD

Programmes you may also be interested in:

- Artificial Intelligence MSc/Diploma
- Artificial Intelligence with Speech and Multimodal Interaction MSc/Diploma
- Intelligent Systems Laboratory PhD/MPhil
- Natural Language Processing PhD

Sensors, Signals and Systems

www.hw.ac.uk/pg-sensors

Programme	Level	Award
T Embedded Systems	Taught	MSc/Diploma
T Mobile Communications	Taught	MSc/Diploma
T Smart Systems Integration (Erasmus Mundus)	Taught	MSc
R Institute of Sensors, Signals and Systems	Research	PhD/MPhil/MSc

School of Mathematical and Computer Sciences

Actuarial Mathematics and Statistics

www.hw.ac.uk/pg-actuarial

Programme	Level	Award
T Actuarial Management	Taught	MSc/Diploma/Certificate
T Actuarial Science	Taught	MSc/Diploma/Certificate
T Actuarial Science and Management (Two years)	Taught	MSc/Diploma
T Financial Mathematics	Taught	MSc

R	Actuarial Mathematics	Research	PhD
R	Statistics	Research	PhD

A wide variety of Research options are available. Visit our website for more information.

Computer Science

www.hw.ac.uk/pg-computer

	Programme	Level	Award
T	Artificial Intelligence	Taught	MSc/Diploma
T	Artificial Intelligence with Speech and Multimodal Interaction	Taught	MSc/Diploma
T	Business Information Management	Taught	MSc/Diploma
T	Computer Systems Management (Also in Dubai)	Taught	MSc/Diploma
T	Data Science (Also in Dubai)	Taught	MSc/Diploma
T	Information Technology (Business) (Also in Dubai)	Taught	MSc/Diploma
T	Information Technology (Graduate Diploma)	Taught	Diploma
T	Information Technology (Software Systems) (Also in Dubai)	Taught	MSc/Diploma
T	Network Security (Also in Dubai)	Taught	MSc/Diploma
T	Software Engineering (Also in Dubai)	Taught	MSc/Diploma
R	Computer Science	Research	MSc
R	Biologically-Inspired Computing	Research	MPhil
R	Computer Games and Interactive Narrative	Research	MPhil
R	Dependable Computing and Foundations	Research	MPhil
R	Intelligent Systems Laboratory	Research	MPhil
R	Parallel and Distributed Systems	Research	MPhil
R	Pervasive and Ubiquitous Computing	Research	MPhil
R	Computer Science	Research	PhD

A wide variety of Research options are available. Visit our website for more information.

Mathematics

www.hw.ac.uk/pg-mathematics

	Programme	Level	Award
T	Applied Mathematical Sciences with Mathematical Biology, Ecology and Medicine	Taught	MSc/Diploma
T	Applied Mathematical Sciences with Climate Change Modelling	Taught	MSc/Diploma
T	Computational Mathematics	Taught	MSc/Diploma
T	Graduate Certificate in the Mathematical Sciences	Taught	Diploma/Certificate
T	Mathematics	Taught	MSc/Diploma
T	Quantitative Finance and Mathematics	Taught	MSc/Diploma
T	Applied Mathematics	Taught	MSc/Diploma
R	Differential Equations	Research	PhD
R	Mathematical Biology	Research	MPhil
R	Mathematical Physics	Research	PhD
R	Numerical Analysis and Scientific Computation	Research	PhD
R	Mathematics	Research	PhD

A wide variety of Research options are available. Visit our website for more information.

School of Social Sciences

Accountancy

www.hw.ac.uk/pg-accounting

	Programme	Level	Award
T	International Accounting and Environmental Economics	Taught	MSc
T	International Accounting and Finance (Also in Dubai)	Taught	MSc
T	International Accounting and Management	Taught	MSc
T	Strategy and International Management Accounting	Taught	MSc
R	Accounting	Research	PhD

Economics

www.hw.ac.uk/pg-economics

	Programme	Level	Award
T	Economics, Banking and Finance	Taught	MSc
T	Energy and Economics	Taught	MSc
T	International Finance and Economic Development	Taught	MSc
R	Economics	Research	PhD

Finance

www.hw.ac.uk/pg-finance

	Programme	Level	Award
T	Finance (Also in Dubai)	Taught	MSc
T	Finance and Management (Also in Dubai)	Taught	MSc
T	International Banking and Finance	Taught	MSc
T	International Finance and Corporate Accountability	Taught	MSc
T	International Finance and Environmental Economics	Taught	MSc
T	Investment Management	Taught	MSc
R	Finance	Research	PhD

Programmes you may also be interested in:

- Financial Management MSc (By Distance Learning)

International Business Management

www.hw.ac.uk/pg-business

	Programme	Level	Award
T	Doctor of Business Administration (By Distance Learning)	Taught	DBA
T	International Business Management (Also in Dubai)	Taught	MSc
T	International Business Management with Finance (Also in Dubai)	Taught	MSc
T	International Business Management with Human Resource Management (Also in Dubai)	Taught	MSc
T	International Business Management with Logistics (Also in Dubai)	Taught	MSc
T	International Business Management with Marketing (Also in Dubai and Malaysia)	Taught	MSc
T	International Business Management with Performance Management	Taught	MSc
T	International Business Management with Project Management	Taught	MSc
T	International Business Management with Sustainability	Taught	MSc
T	International Business Management with Tourism	Taught	MSc
R	Business Management	Research	PhD

Programmes you may also be interested in:

- Master of Business Administration MBA (By Distance Learning)
- MBA with Specialism in Finance (By Distance Learning)
- MBA with Specialism in Human Resource Management (By Distance Learning)
- MBA with Specialism in Marketing (By Distance Learning)
- MBA with Specialism in Oil and Gas Management (By Distance Learning)
- MBA with Specialism in Strategic Planning (By Distance Learning)

International Marketing

www.hw.ac.uk/pg-marketing

Programme	Level	Award
T International Fashion Marketing	Taught	MSc
T International Marketing	Taught	MSc
T International Marketing with Consumer Psychology	Taught	MSc
T International Marketing with Digital Marketing (Also in Dubai)	Taught	MSc
R Marketing	Research	PhD

Programmes you may also be interested in:

- Marketing MSc (By Distance Learning)

Leadership and Organisational Performance

www.hw.ac.uk/pg-leadership

Programme	Level	Award
T Business Strategy, Leadership and Change (Also in Dubai and Malaysia)	Taught	MSc
T European Master in Strategic Project Management (MSPME)	Taught	MSc
T Lean Six Sigma for Operational Excellence (Also in Dubai and Malaysia)	Taught	MSc
T Management and Leadership in Sports Business	Taught	MSc
T Management and Leadership in Sports Performance	Taught	MSc
T Managing Business Performance	Taught	MSc
T Operations Management (Also in Dubai and Malaysia)	Taught	MSc
T Strategic Project Management (Also in Dubai and Malaysia)	Taught	MSc
R Work and Wellbeing	Research	PhD

Programmes you may also be interested in:

- Human Resource Management MSc (By Distance Learning)
- Strategic Planning MSc (By Distance Learning)

Logistics and Supply Chain Management

www.hw.ac.uk/pg-logistics

Programme	Level	Award
T Logistics and Supply Chain Management (Also in Dubai)	Taught	MSc
T Logistics and Supply Chain Management with Business Performance	Taught	MSc
T Logistics and Supply Chain Management with Lean Six Sigma (Also in Dubai)	Taught	MSc
T Logistics and Supply Chain Management with Shipping and Port Operations	Taught	MSc
T Logistics with Green and Sustainable Supply Chain Management	Taught	MSc
R Logistics	Research	PhD

Psychology

www.hw.ac.uk/pg-psychology

Programme	Level	Award
T Business Psychology with Human Resource Management	Taught	MSc
T Business Psychology with Intercultural Communication	Taught	MSc
T Business Psychology (Also in Dubai and Malaysia)	Taught	MSc/Diploma
R Applied Psychology Research	Research	PhD

Translating and Interpreting

www.hw.ac.uk/pg-translating

	Programme	Level	Award
T	Chinese-English Interpreting and Translating	Taught	MSc
T	Chinese-English Translating	Taught	MSc
T	Chinese-English Translating (Two years)	Taught	MSc
T	Chinese-English Interpreting and Translating (Two years)	Taught	MSc
T	Interpreting	Taught	MSc
T	Interpreting and Translating	Taught	MSc
T	Sign Language Interpreting (EUMASLI)	Taught	MSc
T	Translating	Taught	MSc
T	Translating for Business	Taught	MSc
T	Translating for Business with Entrepreneurship	Taught	MSc
T	Translating with Entrepreneurship	Taught	MSc
R	Translation and Interpreting	Research	PhD

Intercultural Communication

www.hw.ac.uk/pg-intercultural

	Programme	Level	Award
T	Intercultural Communication with Marketing	Taught	MSc
T	Intercultural Communication with Human Resource Management	Taught	MSc
T	International Management and Business Communication	Taught	MSc
T	International Management and Business Communication with Human Resource Management	Taught	MSc
T	International Management and Business Communication with Marketing	Taught	MSc
T	Tourism and Heritage Management	Taught	MSc
R	Intercultural Research	Research	PhD

School of Textiles and Design

Fashion, Textiles and Design

www.hw.ac.uk/pg-fashion

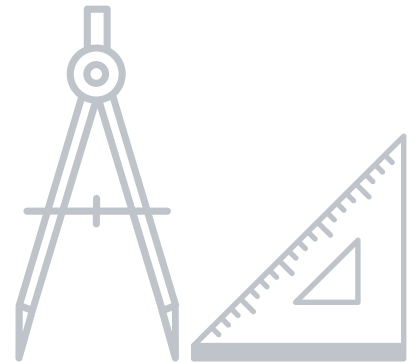
	Programme	Level	Award
T	Ethics in Fashion (Communication, Consumerism and Sustainability) (Scottish Borders Campus)	Taught	MSc/Diploma
T	Fashion and Textiles Design (Scottish Borders Campus)	Taught	MA/Diploma
T	Fashion and Textiles Management (Scottish Borders Campus)	Taught	MSc/Diploma
T	Interior Architecture and Design (Scottish Borders Campus)	Taught	MA/Diploma
T	Knitwear (Design, Heritage and Production) (Scottish Borders Campus)	Taught	MA
R	Colour Science and Technology (Scottish Borders Campus)	Research	PhD/MPhil
R	Practice-Based Design (Scottish Borders Campus)	Research	PhD/MPhil
R	Textile Design and Clothing Manufacture (Scottish Borders Campus)	Research	PhD/MPhil
R	Textile Science and Technology (Scottish Borders Campus)	Research	PhD/MPhil

Our pioneering research is...



CREATING NEW SOLUTIONS IN CARBON STORAGE

Leading research with global industry partners across the entire carbon capture and storage chain. Providing innovative solutions to reduce global carbon dioxide emissions and meet global energy demands.



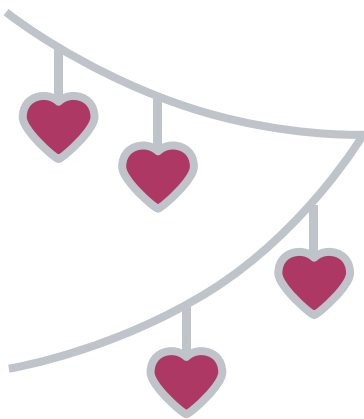
GENERATING A SAFER ENVIRONMENT

Investigating solutions in phase behaviour and kinetics of gas hydrate to improve performance and create a safer petroleum engineering environment.



INNOVATING GLOBAL DESIGN PRACTICE

Exploring how communication works between design professionals and craft practitioners leading to innovating design practice on a global scale.



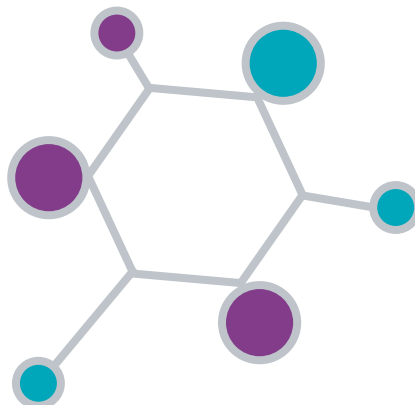
REVOLUTIONISING CELL BIOLOGY

Spearheading a revolution in cell biology to deepen our knowledge of the causes of a wide range of high-profile diseases, attracting scientific interest worldwide.



PROTECTING HUMAN HEALTH

Working with governments and industry worldwide driving innovative research solutions into the safe use of nanotechnology to protect and improve human health.



DESIGNING NEW SOLUTIONS IN CONDUCTIVE TEXTILES

Innovating possibilities for new product development in conductive textiles leading to worldwide solutions and practical applications in the medical, defence and sportswear industries.

DRIVING ARTIFICIAL INTELLIGENCE

Pioneering robotics research that will revolutionise the global economy over the next 20 years spanning the nuclear, space and offshore industries, transport, healthcare and manufacturing.

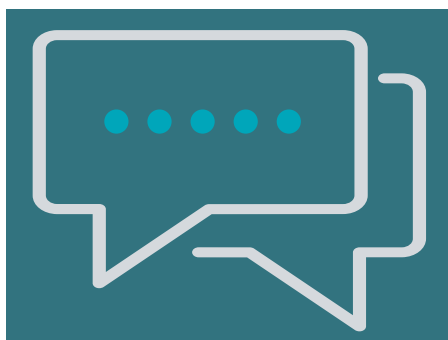
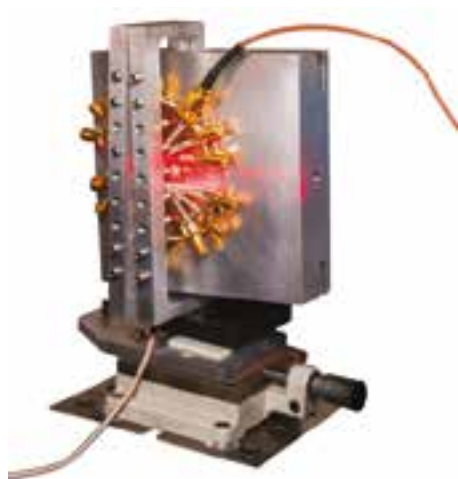


SECURING GLOBAL COMMUNICATION

Leading the way in developing practical quantum communication systems and imaging approaches to make data security systems secure from global cyber-attack.

CHANGING HOW WE SEE THE WORLD

Ground-breaking technology is creating cameras so fast they can freeze light in motion. Capable of seeing through walls and around corners, they are providing innovative solutions in rescue missions and in the car, aircraft and defence industries worldwide.

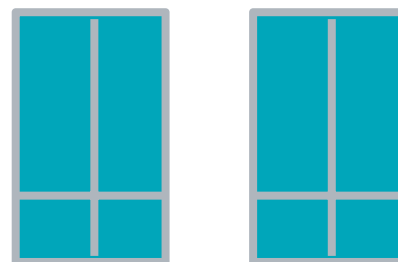


BRIDGING GLOBAL LANGUAGE BOUNDARIES

Leading the way on the effects of multilingual and multicultural communication. Educating international language professionals. Bridging language boundaries, creating understanding in the real world.

CHALLENGING GLOBAL OIL INDUSTRY ISSUES

Tackling the global oil industry's most challenging issues. Forensic geoscience research revealing new understanding of how sedimentary basins develop and evolve. Identifying innovative solutions for safe carbon storage sites.



TACKLING GLOBAL ISSUES IN HOUSING AND POVERTY

Life-changing research tackling global issues in housing and poverty. Heriot-Watt is one of the UK's top social and urban policy centres creating solutions that make a difference in the real world.

FASHIONING THE FUTURE THROUGH PSYCHOTEXTILES

Ground-breaking research into 'psychotextiles' has the potential to transform product manufacturing, engineering and the teaching of art and design. 'Visual medicine' could also lead to alternatives to antidepressants in the medical world.



INNOVATING MEASUREMENT AND ANALYSIS

Challenging the boundaries of automated measurement and analysis systems to drive progress across science, engineering and the world beyond.



IMPROVING QUALITY OF LIFE

Making an impact in the medical and engineering sectors through novel surface engineering solutions improving product quality and longevity to make a lasting difference in the real world.



www.hw.ac.uk/research

Postgraduate Research Degrees

Heriot-Watt provides an outstanding environment to undertake postgraduate research leading to a PhD or EngD. We currently host around 600 PhD and EngD students. First-class training in both specialist and generic skills is provided that focuses on providing the necessary support for career development.

Research projects are offered with supervisors working at the cutting-edge of contemporary topics from the fundamental to the applied in all of our disciplines. Projects often involve working in research teams, with industry involvement, and many with collaborations with other leading research laboratories around the world.

A £7 million Postgraduate Centre provides a hub that combines facilities for training, outreach, and social interaction with other postgraduate students from across the University.

RESEARCH DEGREES:

- PhD and EngD
- DBA
- MRes and MPhil

Research opportunities and scholarships

School, Research Institute, and Research Centre web pages provide detailed information on research and potential research project opportunities for PhD and EngD studies. We offer a number of competitive funded scholarships for research degree studies. Full or partial support may be available for well-qualified candidates from UK research councils, research pools, charities, industry or the University's own scholarships.

The University offers annual James Watt Scholarships, approximately 80 each year, for well-qualified applicants. Other competitive funding is available such as RCUK funded Doctoral Training Awards.

The Research degrees listed are not exhaustive. If you have an idea around a specific research theme please get in touch. Our contact details are listed opposite.

PhD opportunities in Energy, Geoscience, Infrastructure and Society

E: egis-pgr-apps@hw.ac.uk

T: +44 (0) 131 451 8363

PhD opportunities in Engineering and Physical Sciences

E: pgr.eps@hw.ac.uk

T: +44 (0) 131 451 3027

PhD opportunities in Social Sciences

E: pgadmissions.soss@hw.ac.uk

T: +44 (0) 131 451 3284

PhD opportunities in Mathematical and Computer Sciences

E: macspgenquiries@hw.ac.uk

T: +44 (0) 131 451 8444/8337

PhD opportunities in Textiles and Design

E: enquiries@tex.hw.ac.uk

T: +44 (0) 1896 892156

Postgraduate Research Prospectus

www.hw.ac.uk/research/phd-opportunities.htm

Inter-university doctoral training centre schemes

Heriot-Watt participates in a number of inter-university doctoral training centre schemes:

EPSRC Centre for Doctoral Training in Applied Photonics

EPSRC Centre for Doctoral Training in Critical Resource Catalysis (CRITICAT)

Scottish Doctoral Training Centre in Condensed Matter Physics (EPSRC)

Scottish Graduate School of Social Sciences (ESRC)

Continuous Manufacturing and Crystallisation (EPSRC/Heriot-Watt/Industry)

ETP Energy Industry Doctorate Programme (SFC/Heriot-Watt/Industry)

Scottish Universities Physics Alliance Prize Studentships (SFC/Heriot-Watt)

Scottish Informatics and Computer Science Alliance Prize Studentships (SFC/Heriot-Watt)

Marine Alliance for Science and Technology for Scotland Prize Studentships (SFC/Heriot-Watt)

Robotics and Autonomous Systems (Heriot-Watt/University of Edinburgh)

Embedded Intelligence (Heriot-Watt/Loughborough)

Maxwell Institute Graduate School in Analysis and its Applications (MIGSAA) (Heriot-Watt and University of Edinburgh)

Centre for Doctoral Training in Oil and Gas (NERC)

www.hw.ac.uk/research/phd-opportunities.htm

RESEARCHER DEVELOPMENT

Research Futures provides postgraduate research students with a full programme of training and development throughout their PhD, EngD or MPhil studies. The main programme is delivered at the Edinburgh Campus and contains a wide range of courses pitched at various levels of expertise. Course sessions are typically delivered in three-hour sessions facilitated by experts.

Heriot-Watt University is a member of Vitae, an international organisation dedicated to world-class professional and career development of researchers. Vitae offer a wealth of resources and advice designed specifically for researchers.

WORLD-CLASS RESEARCH

The Research Excellence Framework (REF) assesses the quality of research in UK higher education institutions.

**No.1/
9th**

In the REF 2014 Heriot-Watt ranked 9th university in the UK and 1st in Scotland for research impact.

RESEARCH-LED EDUCATION

80%+

Over 80% of our academic staff are engaged in research at internationally recognised levels, delivering impact across society in areas as diverse as providing greater equality for deaf people, managing risk in the insurance industry and enhancing oil extraction from our seas.

82%

Overall 82% of our research is assessed as world-leading or internationally excellent in our core disciplines of science and engineering, business and management, languages and design (REF 2014).

www.hw.ac.uk/research

Our Impact

TOP 2%

Top 2% of universities globally.
QS World University Rankings
2017/18.



How to Apply



APPLYING FOR TAUGHT AND RESEARCH POSTGRADUATE PROGRAMMES

Entry requirements

General rules are:

- For entry to a Postgraduate Diploma programme you need to have completed a first degree
- For entry to a taught Masters programme you need a minimum of a first degree at Lower Second Class Honours (or the equivalent)
- For entry to a research programme you need to have the equivalent of a first degree at the level of First Class or Upper Second Class Honours (or the equivalent)
- If you have relevant work experience and some academic attainments but no degree it may be possible to be admitted to a postgraduate programme but special permission from the Senate of the University will be required
- If English is not your first language then an IELTS score of 6.5 (minimum) will be required. You can also study an English programme at Heriot-Watt to fulfil this condition.

Making your application

To submit an application online you will need to create an account. You can then use these login details to upload your supporting documents or track the status of your application.

For further details of applying online or to request a paper form, visit:

www.hw.ac.uk/pg-uk-apply



ENGLISH FOR POSTGRADUATE STUDY

Postgraduate study requires a good level of English language proficiency and academic skills to ensure you can understand lectures, participate in seminars, read and understand academic research papers and use ideas in your writing. There are a range of programmes to help you to reach the level you need to be successful on your degree.

Full details on all our English programmes and equivalent test scores can be found here:

www.hw.ac.uk/foundation

Pre-Masters English programme

This is for students who need at least a year of language study before they are ready to start their degree. You will have a minimum of IELTS 4.5 or equivalent. The programme includes 20 hours of taught classes per week over two semesters, supplemented by self-study. If you pass all your courses, you can gain a Certificate in Foundation English.

Pre-sessional programmes for students still to meet English entrance requirements

With an IELTS level of 5.5 or equivalent you can join a fourteen-week pre-sessional programme commencing in May, a ten-week programme starting in June, or a six-week programme starting in July. Please refer to the website for required level of individual skills.

Visit the website for more details:

www.hw.ac.uk/foundation

Please note: If your language level is demonstrated to be at B1 when you apply for ten- or six-week courses, you can be given an integrated offer and a single Confirmation of Acceptance for Studies (CAS) to cover the pre-sessional course and your degree (for visa purposes). However, you must pass the pre-sessional programme in order to progress to degree study.

HOW TO APPLY FOR COURSES IN ENGLISH FOR POSTGRADUATE STUDY

You can apply for our courses online.

Full details can be found here:

www.hw.ac.uk/english-uk-apply

You will need to create an account, choose the academic year in which you wish to study (please note that the summer pre-sessional programme in 2018 is in the 2017–2018 academic year) then choose Foundation English from the drop-down box.

Once you have filled in all the relevant sections please upload the following documents:

- Copy of the photo page of your passport
- English language certificates, e.g. IELTS, from an approved centre.

If you have already created an account for your chosen degree programme(s) you can log back in (www.hw.ac.uk/pg-uk-apply) and apply for the Foundation English programme without the need to create a new login and account.



INTERNATIONAL STUDENT ADVISORS OFFICE

Our International Student Advisors can provide help and support on all issues relating to international students including Tier 4 visa applications (both in the UK and outside of the UK), Academic Technology Approval Scheme (ATAS), living and working in the UK, accommodation, childcare, healthcare and organising your finances. You can find more information online: www.hw.ac.uk/isao

Supporting You

As well as supporting your academic career we want to ensure you're getting all the additional help you need. To help you achieve your goals we have a wide range of high-quality academic and personal support staff who can be contacted whenever you need them.

ACCOMMODATION

We have new, state-of-the-art halls of residence on our Edinburgh Campus which provide spacious student accommodation.

Find out more:

www.hw.ac.uk/edin-pg-newhalls

Postgraduate students are housed in self-catering halls, most with en-suite facilities and internet access, with wi-fi throughout.

Find out more:

www.hw.ac.uk/accommodation-ed

For help to find suitable accommodation off-campus please contact flats@hw.ac.uk

For information on student accommodation at our Scottish Borders Campus go to:

www.hw.ac.uk/accommodation-sbc



FINANCES

Effective financial planning is essential for all postgraduate students, whether you are funded or self-financing, a UK national or an international student. We estimate that you will need around £9,700 per annum to meet living costs. Outline student budgets for September 2018 entry will be available from March 2018 at

www.hw.ac.uk/finances

The British Council provides extensive information on student funding options at

www.britishcouncil.org/study-work-create/practicalities/funding-studies

Additional information on potential sources of University funding is available at

www.hw.ac.uk/scholarships



ACCOMMODATION GUARANTEE

New, full-time postgraduate students studying for the full academic year on our Edinburgh Campus are guaranteed accommodation if they have accepted the offer of a place and applied for accommodation before the closing date advertised on our website.



TUITION FEES AND FUNDING

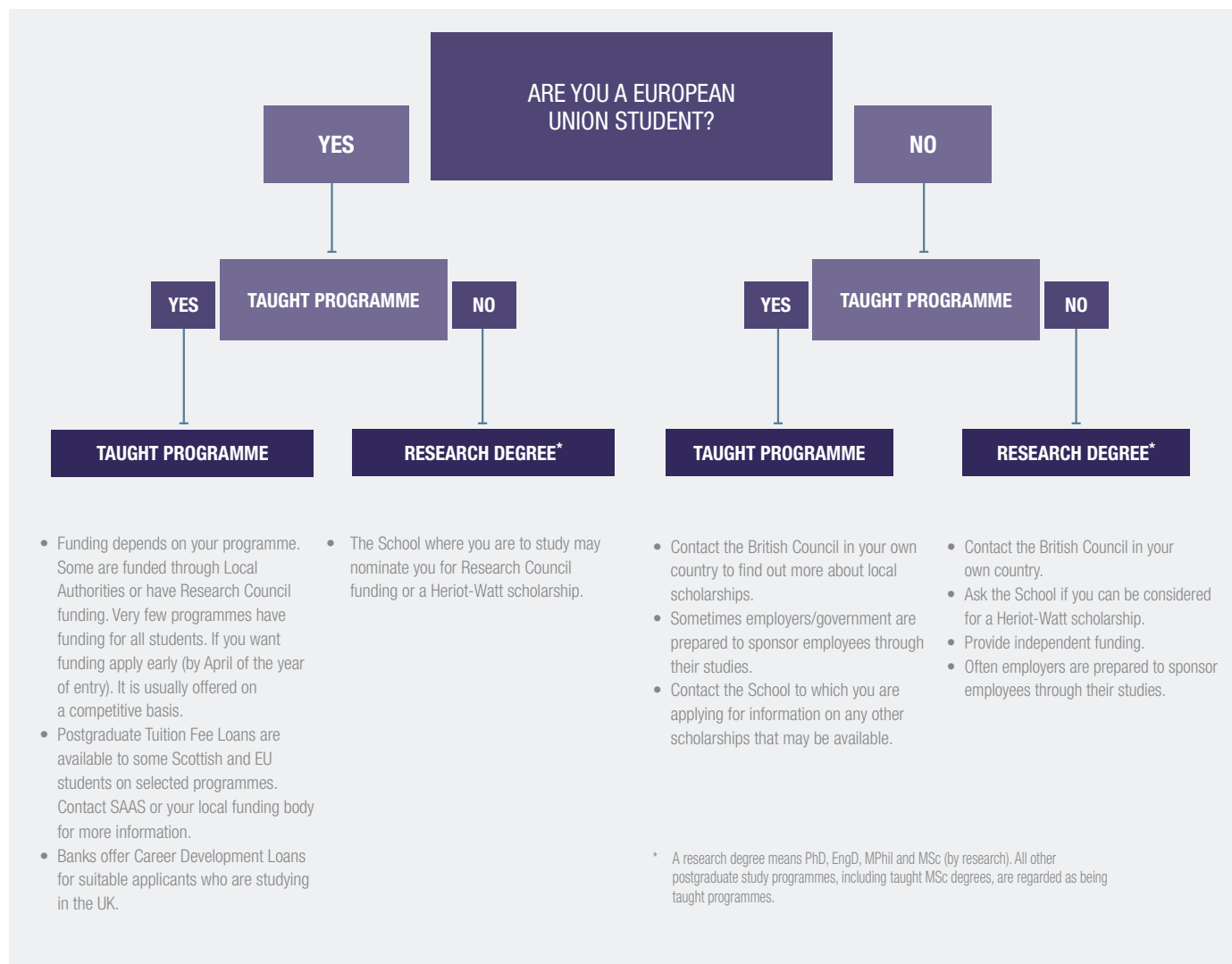
Tuition fees vary, depending on the programme you choose and where you come from. Information on tuition fees and funding can be found online: www.hw.ac.uk/fees-pg

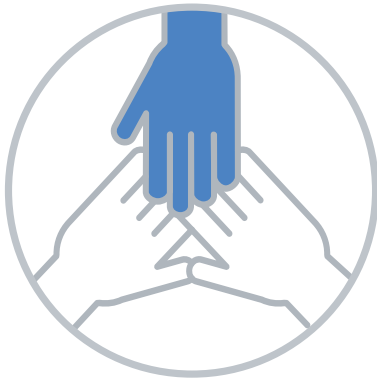
You can find out how to pay here: www.hw.ac.uk/payment

FUNDING POSSIBILITIES

As a great deal depends on your own circumstances, funding cannot be guaranteed by any particular route. Take a look at the table below for further information. If you are not sure whether you qualify as a European Union or 'Other Overseas' student ask for a Fee Status form to complete, also available online.

www.hw.ac.uk/documents/fee-status-enquiry-form.pdf





INTERNATIONAL STUDENT ADVISORS

As a new international student at Heriot-Watt University, you'll be joining one of the largest international student cohorts at a Scottish university. Our small dedicated team of International Student Advisors are here to help you with your preparation for coming to study and live in the UK. We offer advice and assistance on immigration and tuition fees, and general guidance on living and studying in the UK (council tax, bank accounts, healthcare, etc.).

Find out more:
www.hw.ac.uk/isao

SPORT

In 2016, our Edinburgh Campus became home to Oriam, Scotland's Sports Performance Centre. Housed in a stunning £33 million purpose-built sports facility, this cutting-edge development transforms Heriot-Watt into the training hub for, among others, Scotland's national football and rugby squads. The new multi-purpose development will support you to develop your full potential as an athlete, making our Edinburgh Campus a vibrant place of high-level sport.

Find out more:
www.oriamscotland.com



STUDENT UNION

There's more to university life than simply getting your degree, and Heriot-Watt University Student Union is all about helping you to have the best possible experience while you study here. Heriot-Watt University Student Union is run by students, for students. It aims to promote, defend and extend students' rights, provide advice and support, and empower student social and voluntary activity, as well as providing a range of services in an environment where individuals can feel safe and able to participate.

Find out more:
www.hwunion.com



DISABILITY SERVICE

Advice and guidance are just a call or email away. To discuss the support you need please contact the Disability Service on +44 (0) 131 451 3509.

Find out more:
www.hw.ac.uk/disability

INFORMATION AND TECHNOLOGY SERVICES

We provide state-of-the-art Library, Information and Technology services to support your research, learning, teaching and administrative activities.

Find out more:
www.hw.ac.uk/is



COUNSELLING AND SUPPORT

We can offer you counselling, support and information to help you deal with any difficulties you may face while studying with us.

Find out more:
www.hw.ac.uk/counselling

CHILDCARE

We have a nursery based on our Edinburgh Campus. It provides childcare for children between three months and five years old. It is called Pinocchio's and is fully registered with the Care Inspectorate.

Find out more:

www.pinocchiosnursery.co.uk

www.hw.ac.uk/childcare

HEALTH AND WELLBEING

Staying healthy, both physically and mentally, ensures you remain focused on your studies, achieve your full potential and enjoy the experience of being a student.

Find out more:

www.hw.ac.uk/support



CHAPLAINCY AND WORSHIP

The Chaplaincy on our Edinburgh Campus exists to promote spiritual and social wellbeing. It is open to everyone – both students and staff – from all backgrounds and cultures. People of all faiths and no religious faith are welcome.

Find out more:

www.hw.ac.uk/chaplaincy



Index

A

Abroad, studying **3**
Academic entry requirements **41**
Accommodation **41, 42**
Accountability **33**
Accountancy **33**
Acoustics **27**
Actuarial science/mathematics **31–2**
Adeloye, Adebayo **16–17**
Admission requirements **41**
Alumni network **3, 11, 13**
Analysis **32, 37, 39**
Applications **41, 42**
Architecture **27, 35**
Artificial Intelligence **20–1, 31, 32, 37**
Autonomous and interactive systems **31**

B

Banking **33**
Beverage science **28, 30**
Biological Chemistry, Biophysics and Bioengineering, Institute of **18, 30**
Biology **28–9, 32**
Biotechnology **28**
Black and Minority Ethnic communities **29**
Borders Campus **9, 35, 42, 46**
Brewing **30**
Budgeting **41, 42**
Building **27, 29**
Business management **33–4**

C

Cameras **37**
Campuses **6–9, 13, 46**
Carbon management **27, 29, 36, 37**
Careers **3, 12–13**
Careers fairs **13**
Careers Service **13**
Cataracts **19**
Cell biology **18, 36**
Chaplaincy **45**
Chemical sciences **30**
Chevening Scholarships **10**
Childcare **41, 45**
Chinese **35**
Civil Engineering **27**
Climate change **16–17, 28–9, 32**
Clothing manufacture **35**
Collaboration **18, 20–1, 39**
Colour science and technology **35**
Communication **35, 37**
Computer science **20–1, 31, 32, 39**
Condensed matter physics **39**
Construction management **28**
Continuous manufacturing **39**

Coral ecosystems **28**
Corporate accountability **33**
Costs **11, 41, 42, 43**
Counselling **44**
Courses **26–35, 38–9, 41**
Critical resource catalysis **39**
Crystallisation **39**

D

Degrees **38, 41**
Deprivation **24–5, 29, 30, 37**
Design **27, 29–30, 35, 36, 37**
Disability Service **44**
Distilling **30**
Distinction Scholarships **11**
Diversity issues **29**
Doctoral Training Awards **38**
Doctoral training centre schemes **39**
Dubai Campus **9, 27–30, 32–5, 46**
Duncan, Rory **18–19**
Dyes **22**

E

Economics **33**
Ecosystems **28–9**
Edinburgh **6–9**
Edinburgh Campus **6, 8–9, 42, 45, 46**
Edinburgh Centre for Robotics **20**
Edinburgh Super Resolution Imaging Consortium **18**
Edinburgh University, collaboration with **18, 20, 39**
Employers, collaboration with **16, 20–1, 24, 39**
Employment **3, 12–13**
Energy, Geoscience, Infrastructure and Society, School of **9, 16–17, 26–30, 38**
Energy and renewables **28, 29, 30–1, 36, 39**
Engineering **27, 28, 29, 31, 37**
Engineering and Physical Sciences, School of **18–19, 30–1, 38**
English language requirements for entry **41**
Entrepreneurship **28, 30, 35**
Entry requirements **41**
Environmental issues and science **16–17, 22, 28–9, 30, 36**
Equality issues **24–5, 29, 37**
Erasmus Mundus **31**
ESRIC **18**
Ethics **35**
Excellence Scholarships **11**
Exemption from entry requirements **41**
Exercise **28, 44**

F

Faith **45**
Fashion **34, 35**
Fees **11, 43**

Finance **33**
Finances, students' **10–11, 38, 42–3**
Food science **28, 30**
Foundation English **41**
Funding **10–11, 38, 42–3**

G

Galashiels (Scottish Borders) Campus **9, 35, 42, 46**
Games **32**
Gas **28, 29, 30, 33, 39**
Gender equality **24–5**
Geoscience **29**
Global culture and ethos **3, 5, 6–9, 13**
Grants **10–11**

H

Halls of residence **42**
Hamnavoe (Stromness, Orkney) Campus **9, 28, 46**
Health science **27, 28, 30**
Healthcare **19, 23, 36, 37, 41, 45**
Heriot-Watt Scholarships **11**
Heritage **35**
Housing **27, 29–30, 37**
Human Resource Management **33, 34, 35**

I

IB3 **18**
ICIT **9**
Industry, collaboration with **16, 20–1, 24, 39**
Inequality issues **24–5, 29, 37**
Informatics **20–1, 31, 32, 37, 39**
Information services **44**
Institute of Biological Chemistry, Biophysics and Bioengineering **18**
Interactive systems **31**
Intercultural communication **34–5, 37**
International management **33–4, 35**
International Centre for Island Technology **9**
International culture and ethos **3, 5, 6–9, 13, 16**
International marketing **34**
International Student Advisors **41, 44**
Interpreting **35**
Investment management **33**
Island Technology, International Centre for **9**
IT **20–1, 29, 30, 31, 32, 37, 39, 44**

J

James Watt Scholarships **38**
Job applications **13**

K

Keith, Sara **22–3**
Knitwear **35**
Kuala Lumpur **8**

L		
Land	29	
Lane, David	20–1	
Languages	35, 37	
Leadership and organisational performance	34	
Lean Six Sigma	34	
Libraries	44	
Life Science Interface Laboratory	18	
Living costs	11, 41, 42	
Logistics	33, 34	
Loughborough University, collaboration with	39	
M		
Maintenance grants	11	
Malaysia Campus	9, 28–30, 33–5, 46	
Management	27, 28, 33–4, 35	
Maps	46	
Marine science	28–9, 39	
Marketing	33, 34, 35	
Mathematical and Computer Sciences, School of	20–1, 31–2, 38	
Measurement	37	
Mechanical Engineering	31	
Merit Scholarships	11	
Microbial physiology	28	
Migration	24, 27, 30	
Mordants	22	
N		
NASA, collaboration with	20–1	
Network of alumni	3, 11, 13	
Networking events	13	
Noise	27	
Nursery	45	
Nutrition	28	
O		
Offshore installations, abandonment of	28	
Oil	28, 29, 30, 33, 39	
Optoelectronic devices	31	
Organisational performance	34	
Oriam	44	
Orkney Campus	9, 28, 46	
P		
Partnerships	18, 20–1, 39	
Petroleum	28, 29, 30, 39	
Photonics	31, 39	
Physics	18, 29, 30, 32, 39	
Pinocchio's Nursery	45	
Planning	27, 29–30	
Policy, social	27, 29–30, 37	
Postgraduate Centre	9	
Poverty	24–5, 29, 30, 37	
Pre-Masters English programme	41	
Pre-sessional English language study	41	
Process Engineering	31	
Programmes	26–35, 38–9, 41	
Project management	27, 28, 33, 34	
Psychology	34	
Psychotextiles	23, 37	
Putrajaya (Malaysia) Campus	9, 28–30, 33–5, 46	
Q		
Quantum sciences	31	
R		
RCUK funding	38	
Real estate	29	
Recruitment fairs	13	
Religion	45	
Renewables	28, 30	
Requirements for entry	41	
Research degrees	26–35, 38–9	
Research Futures	39	
Residences	42	
Risk management	27	
Robotics	20–1, 31, 37	
S		
Safety	7, 27, 28, 32, 36	
Sang, Kate	24–5	
Scapa Flow	9	
Scholarships	10–11, 38	
Scottish Borders Campus	9, 35, 42, 46	
Sensors, signals and systems	31	
Sign language	35	
Signals, sensors and systems	31	
Six Sigma	34	
Social policy and issues	24–5, 29–30, 37	
Social Sciences, School of	24–5, 33–5, 38	
Sport	34, 44	
Staff	4, 5, 15, 16–25	
Statistics	31–2	
Stromness (Orkney) Campus	9, 28, 46	
Structures	27	
Student Advisors	41, 44	
Studying abroad	3	
Supply chain management	34	
Support	10–11, 12–13, 38, 41–5	
Surveying	28	
Sustainability	16–17, 27, 28, 31, 33, 34, 35	
Systems	27, 31, 32	
T		
Taught programmes	26–35, 41	
Technology support	44	
Textiles	22–3, 35, 36, 37	
Textiles and Design, School of	22–3, 35, 38	
Tourism	34, 35	
Translating	35	
Transport	9, 27	
Tuition fees	11, 43	
U		
UAE Campus	9, 27–30, 32–5, 46	
UK Robotics and Autonomous Systems Network	20	
Uncertainty quantification	29	
University of Edinburgh, collaboration with	18, 20, 39	
Urban design and policy	27, 29–30, 37	
V		
Visas	41	
Vision and visibility	19, 31, 37	
Vitae	39	
W		
Water engineering	27	
Watt Club	3, 13	
Work	3, 12–13, 41	
Work experience and exemption from entry requirements	41	
Worship	45	

World Campuses



UK Campuses



Edinburgh Campus



DISCLAIMER OF LIABILITY

Heriot-Watt University will make all reasonable efforts to deliver the programmes described in this prospectus.

Prospective students should be aware that it is occasionally necessary to modify, discontinue or combine programmes and/or make changes to entry requirements. This may be necessary for a number of reasons such as low enrolments, illness or departure of staff, industrial action or reduction of funding. The University does not provide education on a commercial basis, and is dependent on public and charitable funds which require the University to deploy its resources efficiently and rationally. Changes will only be made if the University reasonably considers it to be necessary.

If a programme is discontinued, the University will use reasonable endeavours to provide a suitable alternative and will take all reasonable steps to minimise disruption; allow a student to withdraw without penalty if a programme is cancelled or significantly varied, with an appropriate refund of tuition fees and deposits.

Heriot-Watt University is a registered Trademark. The logo is a trademark of the University. Neither can be used unless prior written permission has been obtained. All information correct at the time of going to print.

Heriot-Watt University is a Charity registered in Scotland, SC000278.

© Heriot-Watt University, July 2017. All rights reserved.

Editor: Fiona Scott, Marketing and Communications, Heriot-Watt University.

Design and Production: Heriot-Watt University Media Services, The Roundhouse.

Photography: Paul Dodds, Laurence Winram, Douglas McBride, Fraser Dear, Tom Finnie, Mark Symes, The Edinburgh Blog, www.ourscottishborders.com, Simon Quinn, Fiona Nimmo, Anthony Stone, Matt Davies, Colin Hattersley, Nick Pugh.

Front Cover: Nicholas Mancini, MSc Finance and Management.

Back Cover: Vanessa Baldassari, MSc International Accounting and Management.

Heriot-Watt University

Edinburgh Campus

Edinburgh EH14 4AS

T: +44 (0) 131 449 5111

F: +44 (0) 131 449 5153

Heriot-Watt University

Dubai Campus

Dubai International Academic City

PO Box 294345

Dubai

United Arab Emirates

T: +971 4 435 8700

F: +971 4 447 7350

Heriot-Watt University

Malaysia Campus

No 1 Jalan Venna P5/2

Precinct 5

62200 Putrajaya

Malaysia

T: +60 3 8894 3888

F: +60 3 8894 3999

Heriot-Watt University

Scottish Borders Campus

Galashiels TD1 3HF

T: +44 (0) 1896 753351

F: +44 (0) 1896 758965

Heriot-Watt University

Orkney Campus

International Centre for Island Technology (ICIT)

Old Academy

Back Road

Stromness

Orkney

KW16 3AW

T: +44 (0) 1856 850605

www.hw.ac.uk

